



# Marina

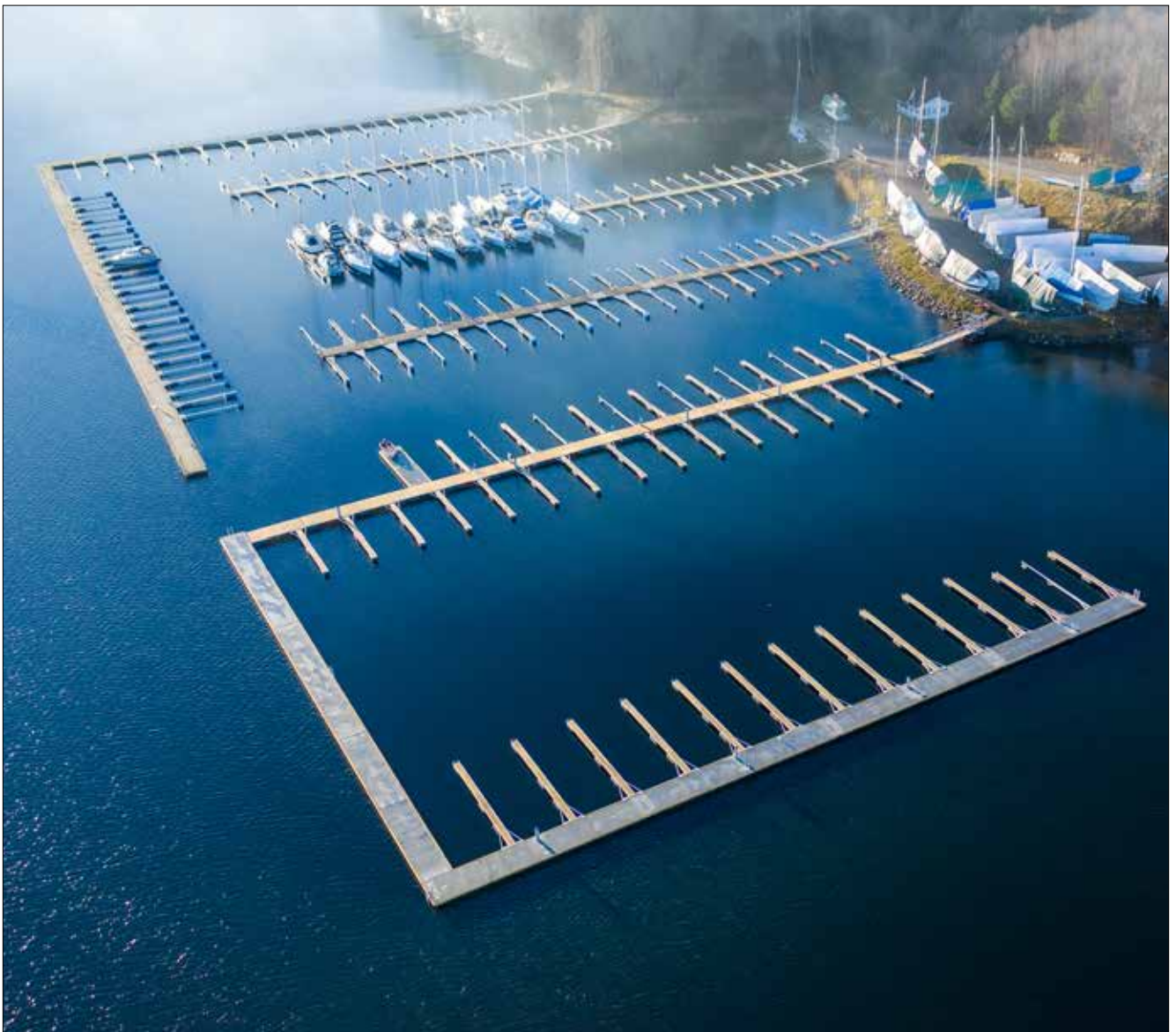
Product catalogue 2025

Prices are in NOK excluding VAT.

# The customer in focus

We deliver products and solutions for traffic safety, marina facilities, lighting masts and tunnel protection. We offer project development, project management, design, production and installation. We are a leading supplier in Norway within our business areas and will always be at the forefront and offer innovative solutions.

With the customer in focus, we will be in the market, both in product and services. Anchored in our values of consideration, drive and integrity, Vik Ørsta will be characterized by a culture of improvement. This vision has been characterising us since the beginning.



*Solnes Båthavn - Sandefjord Municipality. The expansion of the facility consists of 140 m Classic concrete pontoons, 96 m Classic steel pontoons with wooden deck and Classic walkable fingers with wooden dec in lengths of 10 and 12 m.*

*Frontpage photo: Lebesby Municipality, Kjøllefjord.*

# Contents

<b>About Vik Ørsta AS</b>	<b>2</b>
<b>Floating pontoons and breakwaters</b>	<b>(4-11)</b>
Ørsta Futura™ concrete pontoons	4-6
Selected references	7
Classic concrete pontoons	8-10
Concrete pontoons with snow-free walkway	11
Folkebrygga og Hyttebrygga	11
Rennebrygga	11
<b>Floating steel pontoons</b>	<b>(12-18)</b>
Ørsta Futura™ stålbygger	12-14
Classic stålbygger	16-18
<b>Walkable fingers and mooring booms</b>	<b>(20-35)</b>
Ørsta Futura™ fingers and booms	20-26
Classic fingers and booms	28-34
Walkable finger, 120 cm width	35
<b>Gangways</b>	<b>(36-42)</b>
Gangways	38-41
Large gangways	42
<b>Gates</b>	<b>44-45</b>
<b>Spare parts and accessories</b>	<b>(46-65)</b>
Mooring	46-49
Water	51
Safety	53-55
Spare parts and accessories	57-65
<b>Maintenancie agreement</b>	<b>66</b>
<b>Contact us</b>	<b>66-67</b>



*Loen Båtlag - Lovik in Loen. The marina has a total of 45 berths and consists of an 82 m Ørsta Futura concrete pontoon with Ørsta Futura walkable fingers and booms.*

# Ørsta Futura™ concrete pontoons

## Standard concrete pontoons, breakwaters og floating docks

- Prepared for future equipment and environmental requirements
- Exceptional flexibility regarding retrofitting
- Low life cycle costs by eliminating future pontoon replacements
- Connection with long wire connectors
- Through rod for fender attachment



### Technical specifications

The unique feature of the Ørsta Futura™ concrete pontoon is a built-in channel system with a large capacity to constantly be able to pull new cables for electricity, water and wastewater to each berth.

Ørsta Futura™ also has reinforcements that allow for the retrofitting of all types of equipment such as lighting, hose reels, retaining walls, flagpoles, etc. The fendering system is attached using through rod, which do not expose the

concrete to tensile forces.

Ørsta Futura™ is the solution of the future. Therefore, it is also designed with the increasing demand for berths in mind. The beauty of the unique channel network and reinforcement system is that the marina can be easily reconfigured.

### Material quality:

Reinforcement: B500C, 8 mm K335 mesh reinforcement with double the minimum reinforcement requirements.

Dimensioning of reinforcement is in accordance with the Norwegian Standard for aggressive environments (sea).

Floating material: EPS S80  
Concrete: B45 (compressive strength).  
Durability class MF40. Added glass fiber.

Surface: Rough surface for good slip resistance.

### Technical information:

#### Definition:

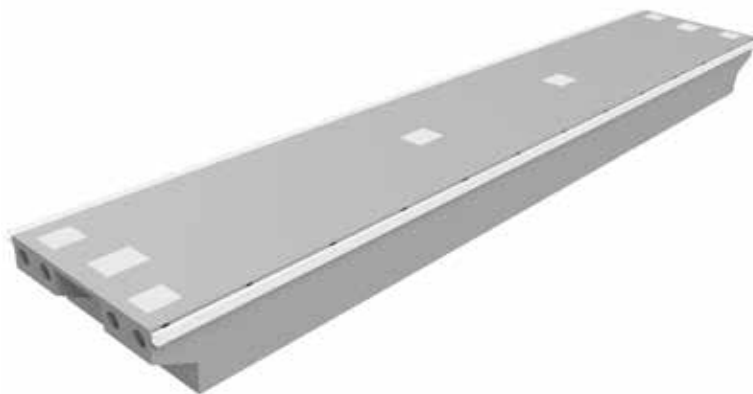
L = Total length without buffers  
H = Height  
D.R. = Draft  
F.B. = Freeboard  
W = Width  
WA = Width Overall



## Concrete pontoons, Ørsta Futura™ Standard concrete pontoons, breakwaters and floating docks

Description	Dimension	Freeboard	Weight	Channels	Price
Concrete pontoon, Ørsta Futura	2,4 x 12,0 x 1,05 m	51 cm	14,5 T	5	165 054
Concrete pontoon, Ørsta Futura	2,4 x 15,6 x 1,05 m	56 cm	17,7 T	5	212 460
Concrete pontoon, Ørsta Futura	2,4 x 20,4 x 1,05 m	59 cm	21,9 T	5	274 152
Concrete pontoon, Ørsta Futura	3,0 x 12,0 x 1,05 m	57 cm	16,3 T	8	196 324
Concrete pontoon, Ørsta Futura	3,0 x 15,6 x 1,05 m	60 cm	20,2 T	8	255 418
Concrete pontoon, Ørsta Futura	3,0 x 20,4 x 1,05 m	62 cm	25,4 T	8	334 027
Breakwater, Ørsta Futura	3,0 x 15,6 x 1,6 m	44 cm	27,3 T	8	267 043
Breakwater, Ørsta Futura	3,0 x 20,4 x 1,6 m	48 cm	34,3 T	8	349 209
Breakwater, Ørsta Futura	4,0 x 15,6 x 1,6 m	51 cm	32,5 T	8	364 360
Breakwater, Ørsta Futura	4,0 x 20,4 x 1,6 m	53 cm	41,1 T	8	476 472
Floating dock, Ørsta Futura	3,0 x 15,6 x 1,6 m	101 cm	26,6 T	8	314 596
Floating dock, Ørsta Futura	3,0 x 20,4 x 1,6 m	106 cm	32 T	8	409 912
Floating dock, Ørsta Futura	4,0 x 15,6 x 1,6 m	103 cm	34,3 T	8	415 330
Floating dock, Ørsta Futura	4,0 x 20,4 x 1,6 m	106 cm	43,3 T	8	543 124
Floating dock, Ørsta Futura	4,0 x 15,6 x 2,0 m	139 cm	38,1 T	8	470 254
Floating dock, Ørsta Futura	4,0 x 20,4 x 2,0 m	144 cm	47,9 T	8	613 994
Floating dock, Ørsta Futura	5,0 x 15,6 x 2,0 m	146 cm	40,6 T	8	563 791
Floating dock, Ørsta Futura	5,0 x 20,4 x 2,0 m	148 cm	52 T	8	739 258

Prices are indicative and excl. VAT. Contact seller for a price quote.  
Concrete pontoon, Ørsta Futura, is available in widths of 2.4 m, 3.0 m, 4.0 m and 5.0 m and lengths from 10.8 m to 20.4 m with 1.2 m intervals.  
Table shows weight and freeboard for some selected dimensions. The values given are indicative and may differ slightly. For other lengths, contact us.  
Fender stock with wear plate: b=126xh=148 mm, impregnation class AB. Fender stock can be replaced with pier profile. Read more on page 45.  
We supply a number of different sizes and dimensions of concrete pontoons, breakwaters and floating docks.



Ørsta Futura™ concrete pontoon with pier profile. By replacing the wooden fender with pier profile, full flexibility is achieved in the installation of walkable fingers and booms, since sideways adjustment is stepless.



The pier profile is made of steel, which makes it stronger and more solid than the wooden fender. The profile is CombiCoat®-protected for extra long lifespan.

# Selected reference facilities

If you want to see more of our references, you can find them on Facebook and Instagram.



*Høya Hytteforening, Levanger Municipality. Classic breakwater, concrete pontoons, walkable fingers and booms.*



*Kjøllefjord, Lebesby Municipality. Concrete pontoons with snow-free walkway and tire fendering. Gangway 14 m with snow-free grating, dimensioned for driving with ATV.*



*Skattøra Marina, Tromsø Municipality. 100 m breakwater with mounted pier profile that provides full flexibility in the installation of walkable fingers and booms. Gangway with grating.*



*Sirevåg Havn in Hå, Rogaland County. Marina with Classic concrete pontoons, Classic steel pontoons, walkable fingers and booms.*



*Bankløkka marina - Port of Horten. Great marina with 160 boat slips for rent.*



*Strand Kajakk-klubb, Høvik, Bærum Municipality. Floating kayak house composed of concrete pontoons equipped with a house for storing 60 kayaks with terrace on the roof.*



Åsvika Utvikling, Risør. Classic concrete pontoons with Ørsta Futura walkable fingers, booms and gangway with wooden deck.

# Classic concrete pontoons

## Standard concrete pontoons, breakwaters and docks

- Traditional pontoon model
- Simple and functional design
- Low life cycle costs by eliminating future pontoon replacements
- Connection with long wire connectors
- Through rod for fender attachment



### Classic concrete pontoon:

Prepared for installation of electricity and water points with cast-in Ø110 pipes through the center of the pontoon, with branches out to each side in the middle.

Electricity, light and water points can be easily attached to aluminum covers that lie above the electricity/water outlets.

The Classic pontoon in concrete has an attractive design and a non-slip surface. The pontoons are connected with

tension wires along the entire length of the pier.

The fendering is attached using through rod, which do not expose the concrete to tensile forces. The pontoon have a wide range of options, hole patterns for light poles, extra bollard attachments, splash guards, fuel pumps, as well as connecting pontoons and much more.

### Material quality:

Reinforcement: B500C, 8 mm K335

mesh reinforcement with double the minimum reinforcement requirements. Dimensioning of reinforcement is in accordance with the Norwegian Standard for aggressive environments (sea).

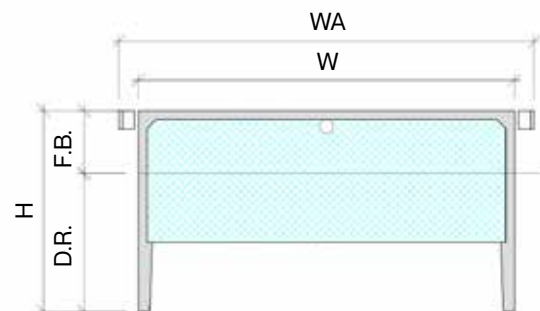
Floating material: EPS S80  
Concrete: B45 (compressive strength).  
Durability class MF40. Added glass fiber.

Surface: Rough surface for good slip resistance.

### Technical information:

#### Definition:

- L = Total length without buffers  
H = Height  
D.R. = Draft  
F.B. = Freeboard  
W = Width  
WA = Width Overall (W + 30 cm)



## Concrete pontoons, Classic

### Standard concrete pontoons, breakwaters and docks

Description	Dimension	Freeboard	Weight	Channels	Price
Concrete pontoon, Classic	2,4 x 12,0 x 1,05 m	51 cm	14,5 T	1	164 684
Concrete pontoon, Classic	2,4 x 15,6 x 1,05 m	56 cm	17,7 T	1	209 567
Concrete pontoon, Classic	2,4 x 20,4 x 1,05 m	59 cm	21,9 T	1	265 795
Concrete pontoon, Classic	3,0 x 12,0 x 1,05 m	57 cm	16,3 T	1	185 179
Concrete pontoon, Classic	3,0 x 15,6 x 1,05 m	60 cm	20,2 T	1	238 365
Concrete pontoon, Classic	3,0 x 20,4 x 1,05 m	62 cm	25,4 T	1	300 389
Breakwater, Classic	3,0 x 15,6 x 1,6 m	44 cm	27,3 T	1	265 570
Breakwater, Classic	3,0 x 20,4 x 1,6 m	48 cm	34,3 T	1	340 252
Breakwater, Classic	4,0 x 15,6 x 1,6 m	51 cm	32,5 T	1	337 572
Breakwater, Classic	4,0 x 20,4 x 1,6 m	53 cm	41,1 T	1	427 589
Floating dock, Classic	3,0 x 15,6 x 1,6 m	101 cm	26,6 T	1	293 228
Floating dock, Classic	3,0 x 20,4 x 1,6 m	106 cm	32 T	1	378 373
Floating dock, Classic	4,0 x 15,6 x 1,6 m	103 cm	34,3 T	1	379 595
Floating dock, Classic	4,0 x 20,4 x 1,6 m	106 cm	43,3 T	1	490 537
Floating dock, Classic	4,0 x 15,6 x 2,0 m	140 cm	38,1 T	1	433 991
Floating dock, Classic	4,0 x 20,4 x 2,0 m	145 cm	47,9 T	1	560 011
Floating dock, Classic	5,0 x 15,6 x 2,0 m	147 cm	40,6 T	1	522 272
Floating dock, Classic	5,0 x 20,4 x 2,0 m	148 cm	52 T	1	673 919

Prices are indicative and excl. VAT. Contact seller for a price quote.  
 Concrete pontoon, Classic, is available in widths of 2.4 m, 3.0 m, 4.0 m and 5.0 m and lengths from 10.8 m to 20.4 m with 1.2 m intervals.  
 Table shows weight and freeboard for some selected dimensions. The values given are indicative and may differ slightly. For other lengths, contact us.  
 Fender stock with wear plate: b=126xh=148 mm, impregnation class AB. Fender stock can be replaced with pier profile. Read more on page 45.  
 We supply a number of different sizes and dimensions of concrete pontoons, breakwaters and floating docks.



Classic Ørsta Futura™ concrete pontoon with pier profile. By replacing the wooden fender with pier profile, full flexibility is achieved in the installation of walkable fingers and booms, since sideways adjustment is stepless.

The pier profile is made of steel, which makes it stronger and more solid than the wooden fender. The profile is CombiCoat®-protected for extra long lifespan.

# Other concrete pontoons

## Concrete pontoons with snow-free walkway

The concrete pontoon is delivered with a snow-free walkway and is designed with the demand for year-round boat slips and harbors in mind. The pontoon has a conical opening with direct contact with the sea in addition to concrete bulkheads having openings for water flow. Supplied in widths of 3.0 m, 4.0 m and 5.0 m and in lengths of 15.6 m and 20.4 m. The concrete pontoon has a total height of 1.2 m and a freeboard of 0.55 - 0.60 m.

- Traditional pontoon model
- Simple and functional design
- Low life cycle costs by eliminating future pontoon replacements
- Connection with long wire connections
- Through rod for fender attachment
- Non-slip and snow-free walkway



## Folkebrygga and Hyttebrygga

Folkebrygga and Hyttebrygga are ideal for private use and are perfect for holiday homes or cottages, or for quiet locations behind breakwaters and the like. Folkebrygga is only available in standard sizes (width incl. wooden fenders): 12.5 m x 2.7 m x 1 m. Freeboard 0.55 m.

Hyttebrygga is available in two sizes and (width incl. wooden fenders): Hyttebrygga L: 7.5 m x 3.0 m x 0.85 m. Freeboard 0.45 m. Hyttebrygga XL: 10 m x 3,0 m x 0,85 m. Fribord 0,45 m.

- Concrete deck with anti-slip properties
- Through rod for fender attachment
- Prepared for installation of electricity and water points in the middle of the pier
- Connection with short wire connections
- Long lifespan
- Low maintenance



*Folkebrygga.*

## Rennebrygga

Rennebrygga is a concrete pontoon that provides for the transmission of electricity and water in an external channel. The pontoon can be supplied as a regular concrete floating pontoon and as a breakwater. Rennebrygga is supplied in widths of 2.4 m, 3.0 m, 4.0 m and 5.0 m and in lengths from 10.8 m to 20.4 m with 1.2 m intervals.

- Drainage solution for cables and pipes for electricity and water
- Long lifespan
- Low maintenance
- Nice design and clean surface
- Through rod for fender attachment



*Price on request.*

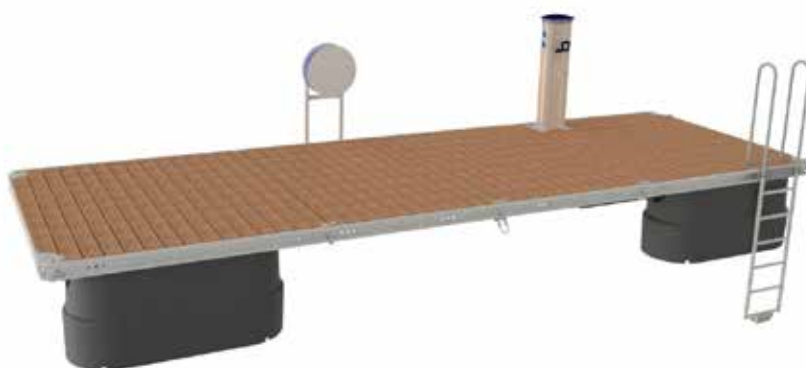


*Kilen Marina on Hvasser, Tjøme in Vestfold County. A pier consisting of Ørsta Futura steel pontoons with wooden deck. Pontoons and booms that are CombiCoat®-protected for long-lasting durability.*

# Ørsta Futura™ steel pontoons

## CombiCoat®-protected

- Good and flexible design
- Roll stable
- Provides good water flow
- Silent couplings
- Non-sinking, foam-filled pontoons
- Easy adjustment of boat spaces
- Few wearing parts - easy replacement
- Long service intervals
- CombiCoat®-protected



Steel pontoons

### Pontoon

Steel frame of bolted components, surface treated with our CombiCoat® method, which consists of hot-dip galvanizing and two layers of powder coating

### Deck

Wooden deck with removable planks for easy inspection and maintenance. Alternatively, a hot-dip galvanized

grating is available, providing extra safe, snow-free passage. Other decking options can be provided upon request.

### Floaters

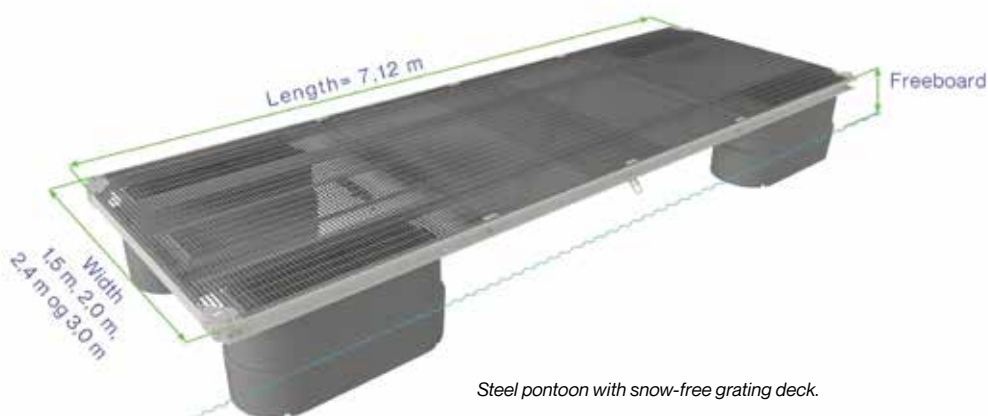
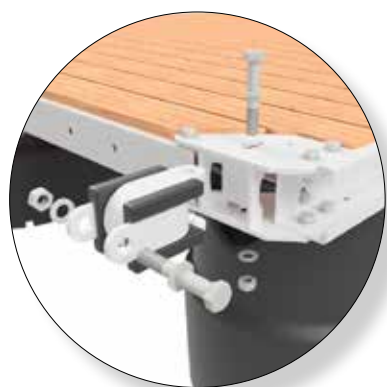
The steel pontoon is supplied with four 630 liter floaters. The floaters are made of solid-molded polyethylene and are filled with polystyrene. The floaters are unsinkable.

### Connection

Patented polyurethane connector that is completely silent and provides minimal wear and stable pier alignments.

### Additional equipment

Fender, mooring bollard, light and power bollard, water pedestal and safety ladder.



Steel pontoon with snow-free grating deck.

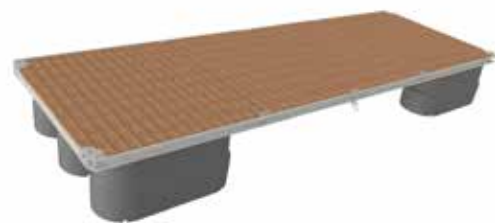
## Steel pontoon, Ørsta Futura™ Wooden deck

Part. nr.	Description	Dimension	Floater	Friboard	Weight	Price
10022227	Steel pontoon, Ørsta Futura	1,5 x 7 m	4 x 630E	62 cm	772 kg	72 059
10004977	Steel pontoon, Ørsta Futura	2,0 x 7 m	4 x 630E	59 cm	874 kg	70 778
10004981	Steel pontoon, Ørsta Futura	2,4 x 7 m	4 x 630E	57 cm	934 kg	71 893
10022231	Steel pontoon, Ørsta Futura	3,0 x 7 m	4 x 630E	54 cm	1 058 kg	88 920
10004965	End steel pontoon, Ørsta Futura	2,0 x 7 m	4 x 630E + 1 x 600E	60 cm	920 kg	77 922
10004967	End steel pontoon, Ørsta Futura	2,4 x 7 m	4 x 630E + 1 x 600E	59 cm	980 kg	79 037
10004969	End steel pontoon, Ørsta Futura	3,0 x 7 m	4 x 630E + 1 x 600E	56 cm	1 105 kg	95 779

*Pontoons can be supplied with 600E floaters, providing a freeboard that is 22 cm lower.  
When using pontoons without fingers or with fingers on only one side, we recommend contacting the seller.  
Prices are indicative and exclude VAT. Please contact the seller for a price quote.*



*Steel pontoon with wooden deck.*



*End steel pontoon with wooden deck.*

## Grating deck

Part. nr.	Description	Dimension	Floater	Friboard	Weight	Price
10004978	Steel pontoon, Ørsta Futura	2,0 x 7 m	4 x 630E	58 cm	916 kg	99 341
10004982	Steel pontoon, Ørsta Futura	2,4 x 7 m	4 x 630E	56 cm	1 000 kg	88 153
10022234	Steel pontoon, Ørsta Futura	3,0 x 7 m	4 x 630E	53 cm	1 212 kg	132 899
10004966	End steel pontoon, Ørsta Futura	2,0 x 7 m	4 x 630E + 1 x 600E	58 cm	1 043 kg	106 485
10004968	End steel pontoon, Ørsta Futura	2,4 x 7 m	4 x 630E + 1 x 600E	56 cm	1 053 kg	95 297
10022235	End steel pontoon, Ørsta Futura	3,0 x 7 m	4 x 630E + 1 x 600E	53 cm	1 340 kg	140 410

*Pontoons can be supplied with 600E floaters, providing a freeboard that is 22 cm lower.  
When using pontoons without fingers or with fingers on only one side, we recommend contacting the seller.  
Prices are indicative and exclude VAT. Please contact the seller for a price quote.*



*Steel pontoon with grating deck.*



*End steel pontoon with grating deck.*



The marina at Loen Båtlag in Nordfjord features an 82-meter Ørsta Futura floating concrete pier, Ørsta Futura walkable fingers, booms and an 8 meter gangway with non-slip grating deck.

## Choose a supplier that will still be around when you expand

The demand for new berths seems to be instatiable. Thus, most marinas will eventually be considered for expansion. In such cases, it is beneficial to be able to contact your supplier. Unfortunately, too many have experienced that the supplier is no longer in business, or that the facility is imported with an unknown manufacturer.

**Solutions for the future**  
 Vik Ørsta AS avd. Marina has built trust among Norwegian and European customers since 1984, and we intend to continue doing so. All solutions are developed in.house, and in most cases, it will be possible to expand an existing facility, even if it is a few years old. This approach offers

significant savings while ensuring that quality and safety requirements are properly maintained.

*Vik Ørsta AS places great importance on being certified for all tasks we undertake.*



*All processes are quality assured in accordance with NS-EN-ISO 9001:2008. The environmental standard adhered to is NS-EN-ISO 14001:2004*

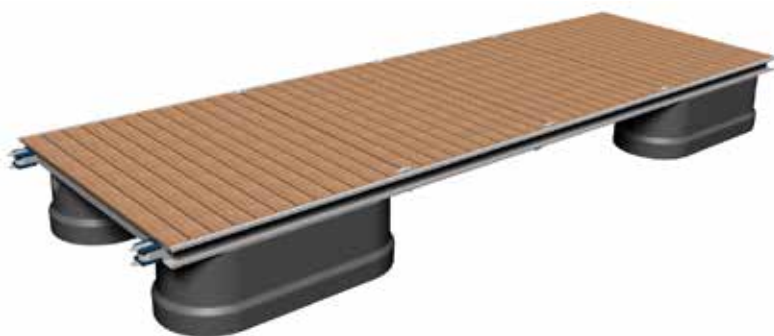


*Tonnes Havn, Lurøy Municipality. Steel pontoons mounted along the quay to provide optimal space utilization in the harbour.*

# Classic steel pontoons

## Hot-dip galvanized

- Good and flexible design
- Roll stable
- Provides good water flow
- Silent couplings
- Non-sinking, foam-filled pontoons
- Easy adjustment of boat spaces
- Few wearing parts



### Pontoon

Welded steel frame with a hot-dip galvanized finish.

### Decking

Wooden deck with removable planks for easy inspection and maintenance. Alternatively, a hot-dip galvanized grating is available, providing extra safe, snow-free passage.

### Floaters

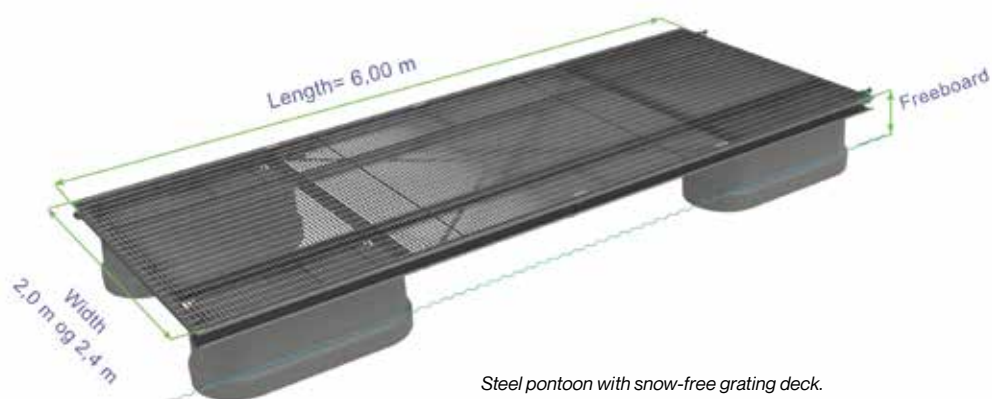
The steel pontoon is supplied with four 630 liter floaters. The floaters are made of solid-molded polyethylene and are filled with polystyrene. The floaters are unsinkable.

### Connection

Patented polyurethane connector that is completely silent and provides minimal wear and stable pier alignments.

### Additional equipment

Fender, mooring bollard, light and power bollard, water outlet and swim/safety ladder. Additional steel equipment is delivered CombiCoat® treated in white.



Steel pontoon with snow-free grating deck.

## Steel pontoon, Classic Wooden deck

Part. nr.	Description	Dimension	Floater	Friboard	Weight	Price
10005010	Steel pontoon, Classic	2,0 x 6 m	4 x 630E	66 cm	596 kg	48 359
10005012	Steel pontoon, Classic	2,4 x 6 m	4 x 630E	65 cm	638 kg	53 252
10005014	End steel pontoon, Classic	2,0 x 6 m	4 x 630E + 1 x 600E	66 cm	625 kg	54 573
10005016	End steel pontoon, Classic	2,4 x 6 m	4 x 630E + 1 x 600E	65 cm	667 kg	59 466

*Pontoons can be supplied with 600E floaters, providing a freeboard that is 22 cm lower.  
When using pontoons without fingers or with fingers on only one side, we recommend contacting the seller.  
Prices are indicative and exclude VAT. Please contact the seller for a price quote.*



Steel pontoon with wooden deck.



End steel pontoon with wooden deck.

## Grating deck

Part. nr.	Description	Dimension	Floater	Friboard	Weight	Price
10005011	Steel pontoon, Classic	2,0 x 6 m	4 x 630E	65 cm	646 kg	61 378
10005013	Steel pontoon, Classic	2,4 x 6 m	4 x 630E	64 cm	688 kg	65 121
10005015	End steel pontoon, Classic	2,0 x 6 m	4 x 630E + 1 x 600E	65 cm	675 kg	67 592
10005017	End steel pontoon, Classic	2,4 x 6 m	4 x 630E + 1 x 600E	64 cm	717 kg	71 331

*Pontoons can be supplied with 600E floaters, providing a freeboard that is 22 cm lower.  
When using pontoons without fingers or with fingers on only one side, we recommend contacting the seller.  
Prices are indicative and exclude VAT. Please contact the seller for a price quote.*



Steel pontoon with grating deck.



End steel pontoon with grating deck.



Grillstad Marina AS, Trondheim Municipality, Trøndelag county. Walkable fingers and mooring booms with an angle that ensures efficient use of space in the marina.

## The good life for people and boats

Few, if any, are more enthusiastic than boating enthusiasts. Securing a spot in a marina where the boat is safe and both young and old enjoy themselves means a lot. For developers, it's evident that a better price per berth can be achieved when the marina is attractive, well-equipped, and secure.

### You can never be too careful with the details

Consider fendering and silent hinges, for example. We genuinely believe that both experienced and inexperienced skippers should be able to dock at their

berth without scratching their boat. That's why we design boat-friendly features and provide food fendering. We also believe that squeaky hinges and connections shouldn't ruin the tranquility far inland. We avoid this with designs that protect, longer-lasting seals, and CombiCoat® - the market's best rust protection.

### People take better care of things that are nice than those that are unattractive

The fact that steel doesn't rust, ropes and wires aren't left lying around, and

trash bins are emptied all contribute to creating orderly individuals. A Vik Ørsta marina is full of well-thought-out solutions that eliminate irritations and encourage good behavior.

### Safe boat owners sleep through the storms

Meteorologists say the weather is going to become wilder and wetter. Our marinas are well-prepared for that. As long as boat owners moor their boats correctly, there is no danger.



Our patented rubber coupling is a silent, springy quick coupling that prevents both noise and wear. It is part of the fastening system that connects the Ørsta Futura™ and Classic walkable finger to the steel pontoon, and it's one of many examples of how we always prioritize safety and comfort.

It's the details that make the difference.



*Håvoll Småbåttlag, Ørsta Municipality, Møre og Romsdal. Ørsta Futura steel pontoon and walkable fingers with wooden decking.*

# Ørsta Futura™ fingers and booms

## CombiCoat®-protected

- Fully fendered
- Good buoyancy - unsinkable pontoons
- Silent hinges
- Offered with wooden deck or grating deck
- Easy installation and adjustment
- Simple maintenance and long service intervals
- CombiCoat®-protected



Walkable fingers with grating deck.



Walkable finger, two-pipe



Mooring boom, one-pipe



Walkable boom, two-pipe



Connection to steel pontoon.



Connection to concrete pontoon.

### General

Fingers and booms is designed with a unique shock-absorbing frame. All variants (types and lengths) have been full-scale tested under controlled conditions. The steel components are CombiCoat®-protected. That means they are first hot-dip galvanized and then coated with two layers of white powder coating, providing a lifespan of 40-50 years.

### Decking

Wooden deck and grating deck. Other decking options can be provided upon request.

### Hinges

Silent, springy rubber couplings.  
Can be easily adjusted continuously to the desired width.  
Patented.

### Fendring

Fully fendered with a smooth and soft fender strip with solid fastening along the entire length of the finger. Made from UV-resistant material where the color does not transfer.

### Lengths

Walkable finger (60 cm) available in lengths of 5 m, 6 m, 7 m, 8 m, 10 m and 12 m.

Walkable boom (30 cm) available in lengths of 6 m, 7 m, 8 m and 10 m.

Mooring boom (10 cm) available in lengths of 5 m, 6 m, 7 m and 8 m.

### Diagonal brace/triangle plate

Diagonal braces/triangle plates for fingers are essential to prevent overloading at the pontoon connections. Our warranty requires at least one diagonal brace/triangle for lengths of 7 meters and above, and two for lengths of 10 meters and above. Lengths up to 6 meters can remain straight. For booms, the limitation is the main beam itself, so only one diagonal brace/triangle is needed regardless of length.

### Additional equipment

Neptun's trident, fold-down ladder.

## Walkable finger, Ørsta Futura™, width 60 cm Wooden deck

Part. nr.	Description	Dimension	Floater	Weight	Price
10005035	Walkable finger, Ørsta Futura, R	5,25 m	1 x 600A	174 kg	22 911
10005039	Walkable finger, Ørsta Futura, HR	5,25 m	1 x 600A	194 kg	25 478
10005041	Walkable finger, Ørsta Futura, VR	5,25 m	1 x 600A	194 kg	25 470
10005043	Walkable finger, Ørsta Futura, DT	5,25 m	1 x 600A	212 kg	28 465
10005055	Walkable finger, Ørsta Futura, R	6,25 m	1 x 600A	202 kg	24 944
10005059	Walkable finger, Ørsta Futura, HR	6,25 m	1 x 600A	218 kg	26 996
10005063	Walkable finger, Ørsta Futura, VR	6,25 m	1 x 600A	218 kg	26 978
10005067	Walkable finger, Ørsta Futura, DT	6,25 m	1 x 600A	238 kg	29 973
10005077	Walkable finger, Ørsta Futura, HR	7,25 m	1 x 600A	249 kg	27 619
10005081	Walkable finger, Ørsta Futura, VR	7,25 m	1 x 600A	249 kg	27 573
10005085	Walkable finger, Ørsta Futura, DT	7,25 m	1 x 600A	272 kg	30 563
10005104	Walkable finger, Ørsta Futura, HR	8,25 m	1 x 600A	268 kg	31 540
10005108	Walkable finger, Ørsta Futura, VR	8,25 m	1 x 600A	268 kg	31 532
10005112	Walkable finger, Ørsta Futura, DT	8,25 m	1 x 600A	288 kg	34 514
10005122	Walkable finger, Ørsta Futura, HR	10,25 m	1 x 600A + 1 x 600E	408 kg	48 807
10005126	Walkable finger, Ørsta Futura, VR	10,25 m	1 x 600A + 1 x 600E	408 kg	48 827
10005130	Walkable finger, Ørsta Futura, DT	10,25 m	1 x 600A + 1 x 600E	436 kg	51 940
10005027	Walkable finger, Ørsta Futura, DT *	12,25 m	1 x 600A/600E/630E	569 kg	84 623

Prices are indicative and exclude VAT. Please contact the seller for a price quote.  
\*Recommended for installation only on concrete pontoons.



Walkable finger, DT, with wooden deck.

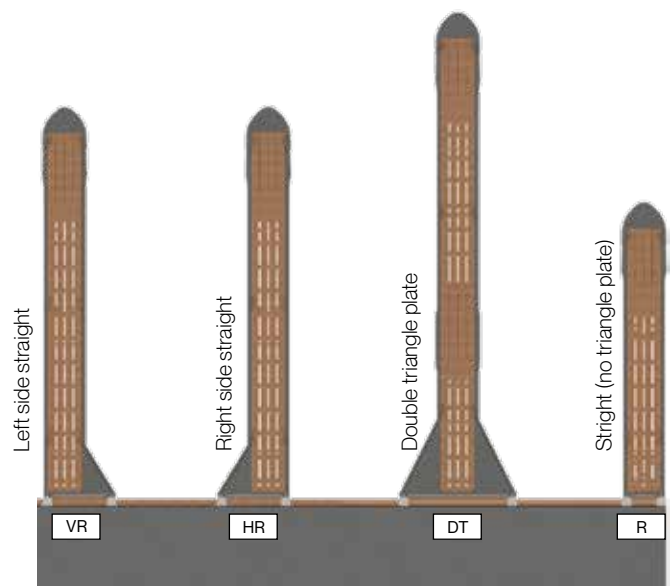


Illustration of walkable finger, Ørsta Futura™, showing the placement of triangle plates/diagonal plates.

## Grating deck

Part. nr.	Description	Dimension	Floater	Weight	Price
10005036	Walkable finger, Ørsta Futura, R	5,25 m	1 x 600A	252 kg	25 174
10022238	Walkable finger, Ørsta Futura, HR	5,25 m	1 x 600A	275 kg	27 745
10022240	Walkable finger, Ørsta Futura, VR	5,25 m	1 x 600A	275 kg	27 673
10022244	Walkable finger, Ørsta Futura, DT	5,25 m	1 x 600A	298 kg	30 208
10005056	Walkable finger, Ørsta Futura, R	6,25 m	1 x 600A	293 kg	31 258
10005060	Walkable finger, Ørsta Futura, HR	6,25 m	1 x 600A	310 kg	33 815
10005064	Walkable finger, Ørsta Futura, VR	6,25 m	1 x 600A	310 kg	33 827
10005068	Walkable finger, Ørsta Futura, DT	6,25 m	1 x 600A	333 kg	34 780
10005078	Walkable finger, Ørsta Futura, HR	7,25 m	1 x 600A	341 kg	34 339
10005082	Walkable finger, Ørsta Futura, VR	7,25 m	1 x 600A	341 kg	34 484
10005086	Walkable finger, Ørsta Futura, DT	7,25 m	1 x 600A	364 kg	37 342
10005105	Walkable finger, Ørsta Futura, HR	8,25 m	1 x 600A	409 kg	43 370
10005109	Walkable finger, Ørsta Futura, VR	8,25 m	1 x 600A	409 kg	43 312
10005113	Walkable finger, Ørsta Futura, DT	8,25 m	1 x 600A	433 kg	46 340
10005123	Walkable finger, Ørsta Futura, HR	10,25 m	1 x 600A + 1 x 600E	482 kg	57 993
10005127	Walkable finger, Ørsta Futura, VR	10,25 m	1 x 600A + 1 x 600E	482 kg	58 013
10005131	Walkable finger, Ørsta Futura, DT	10,25 m	1 x 600A + 1 x 600E	503 kg	61 397
10005028	Walkable finger, Ørsta Futura, DT *	12,25 m	1 x 600A/600E/630E	700 kg	94 778

Prices are indicative and exclude VAT. Please contact the seller for a price quote.  
\*Recommended for installation only on concrete pontoons.



Walkable finger, DT, with grating deck.

## Walkable boom, Ørsta Futura™, width 30 cm Wooden deck

Part. nr.	Description	Dimension	Floater	Weight	Price
10005093	Walkable boom, Ørsta Futura, HR	8,10 m	1 x 300A + 1 x 300E	270 kg	35 889
10005097	Walkable boom, Ørsta Futura, VR	8,10 m	1 x 300A + 1 x 300E	270 kg	35 881
10005100	Walkable boom, Ørsta Futura, DT	8,10 m	1 x 300A + 1 x 300E	288 kg	38 121
10016550	Walkable boom, Ørsta Futura, HR	10,10 m	1 x 300A + 1 x 300E	330 kg	37 545
10005116	Walkable boom, Ørsta Futura, VR	10,10 m	1 x 300A + 1 x 300E	330 kg	37 523
10005118	Walkable boom, Ørsta Futura, DT	10,10 m	1 x 300A + 1 x 300E	360 kg	41 285

Prices are indicative and exclude VAT. Please contact the seller for a price quote.



Walkable boom, VR, with wooden deck.

## Grating deck

Part. nr.	Description	Dimension	Floater	Weight	Price
10005094	Walkable boom, Ørsta Futura, HR	8,10 m	1 x 300A + 1 x 300E	302 kg	41 083
10022245	Walkable boom, Ørsta Futura, VR	8,10 m	1 x 300A + 1 x 300E	302 kg	40 913
10005101	Walkable boom, Ørsta Futura, DT	8,10 m	1 x 300A + 1 x 300E	320 kg	46 383
10022247	Walkable boom, Ørsta Futura, HR	10,10 m	1 x 300A + 1 x 300E	380 kg	46 175
10022249	Walkable boom, Ørsta Futura, VR	10,10 m	1 x 300A + 1 x 300E	380 kg	46 175
10005119	Walkable boom, Ørsta Futura, DT	10,10 m	1 x 300A + 1 x 300E	413 kg	53 372

Prices are indicative and exclude VAT. Please contact the seller for a price quote.



Walkable boom, VR, with grating deck.

## Mooring boom, Ørsta Futura™, width 10 cm

Part. nr.	Description	Dimension	Floater	Weight	Price
10005031	Mooring boom, Ørsta Futura, HR	5,10 m	1 x 106A	95 kg	13 116
10005033	Mooring boom, Ørsta Futura, VR	5,10 m	1 x 106A	95 kg	13 107
10005046	Mooring boom, Ørsta Futura, HR	6,10 m	1 x 106A	120 kg	14 836
10005048	Mooring boom, Ørsta Futura, VR	6,10 m	1 x 106A	120 kg	14 818
10005071	Mooring boom, Ørsta Futura, HR	7,10 m	1 x 108A	127 kg	17 891
10005073	Mooring boom, Ørsta Futura, VR	7,10 m	1 x 108A	127 kg	17 894
10005089	Mooring boom, Ørsta Futura, HR	8,10 m	1 x 108A	137 kg	18 692
10005091	Mooring boom, Ørsta Futura, VR	8,10 m	1 x 108A	137 kg	18 675

*Prices are indicative and exclude VAT. Please contact the seller for a price quote.*



Mooring boom, HR.

# Hinges, Ørsta Futura™

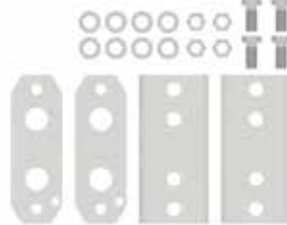
To install a finger, one pair of hinges required. It can easily be moved to the desired berth.

Art. nr.	Beskrivelse	Dimensjon	Vekt	Pris
10005769	Hinge for pier profile (pair), CombiCoat®	110 x 250 mm (backplate)	10 kg	1119
10005772	Hinge for C-profile (pair), CombiCoat®	70 x 200 mm (backplate)	6 kg	674
10005768	Hinge for wooden fender (pair), CombiCoat®	128 x 148 mm	8 kg	1334
10005764	Hinge for wooden fender, 12 m finger (pair), CombiCoat® *	128 x 148 mm	14 kg	2357
10005770	Hinge for pier profile, 12 - 15 m finger (pair), CombiCoat® *	110 x 395 mm (backplate)	16 kg	2314
10005349	C-profile 80 x 40 x 3 mm, CombiCoat®	6 m	27 kg	2473
10005352	C-profile 80 x 40 x 3 mm, CombiCoat®	2 m	9 kg	1117
10009939	Pier profile 120 x 100 x 4 mm, CombiCoat®	6 m	71 kg	5862

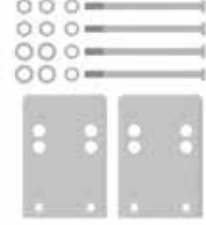
Prices are indicative and exclude VAT. Please contact the seller for a price quote.  
\*Recommended for installation only on concrete pontoons.



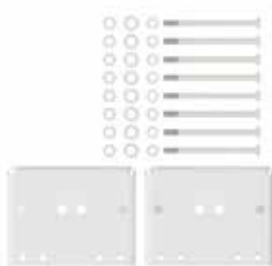
10005769



10005772



10005768



10005764



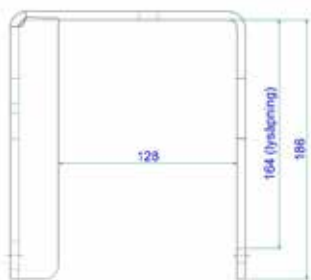
10005770



10005349 and 10005352



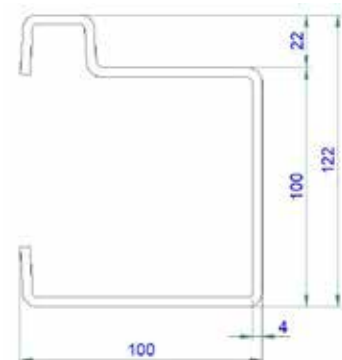
10009939



Sketch for 10005768 and 10005764

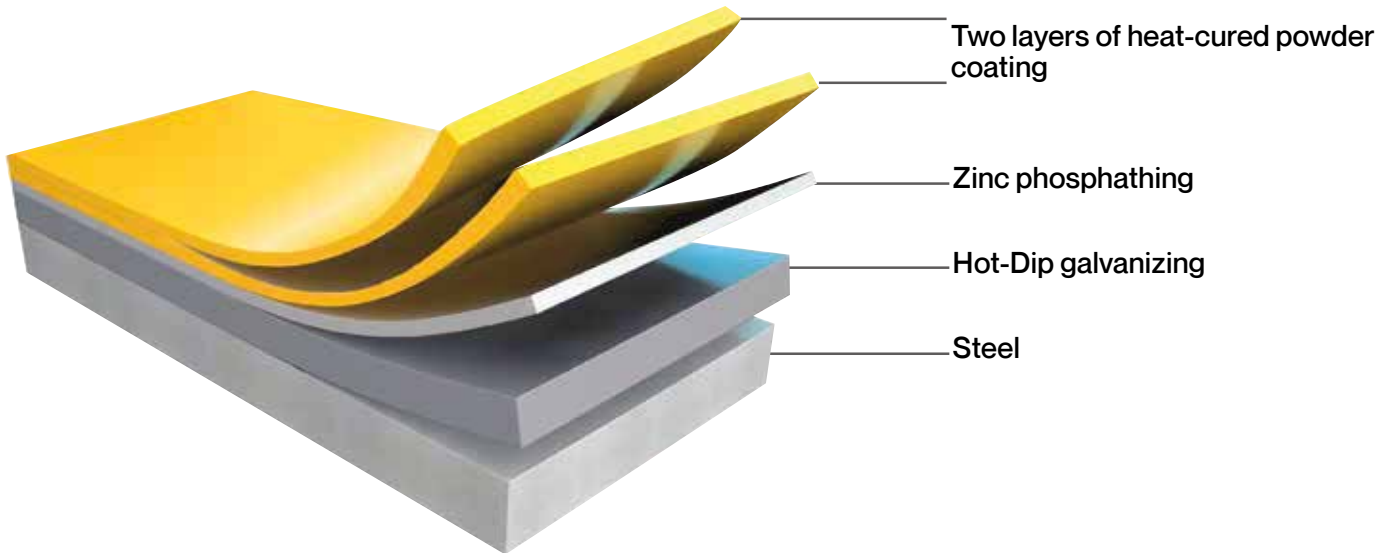


Sketch for 10005349 and 10005352



Sketch for 10009939

# What is CombiCoat®?



The model shows CombiCoat® surface treatment with two layers of powder coating, which provides extra corrosion protection compared to the standard method with a single powder-coat layer. Two-layer powder coating is used, among other things, on our marina installations. Our NORSOK M-501, System 6 approval is based on CombiCoat® surface treatment with a single layer of powder coating.

CombiCoat® combines the two protective treatment methods of hot-dip galvanizing and powder coating, where the coating is cured to the substrate. The result is a coating that does not flake off. The processes ensure the product has a long lifespan, even in highly corrosive environments. It lasts and remains attractive year after year.

**CombiCoat® =  
Hot-dip galvanizing + zinc  
phosphating  
+ powder coating**

## Hot-Dip galvanizing

Hot-dip galvanizing as corrosion protection has been known since 1743, and the main principles remain the same today as they were back then. In most cases, hot-dip galvanizing is the best and most economical corrosion protection for steel. During hot-dip galvanizing, zinc and iron react to form an alloy. Hot-dip galvanizing is usually performed according to EN ISO 1461 and according to technical delivery conditions issued by the Nordic Galvanizers Association..

## Powder Coating

Powder coating is a modern industrial process for untreated or galvanized surfaces. CombiCoat® is suitable where

there are high demands for corrosion protection, or where there is a desire for a nicer surface and color. Our facility can handle steel structures up to 12 meters in length and weighing up to 1000 kg.

## Color

Since CombiCoat® can be delivered in all available RAL and NCS colors upon request, the customer is free to add their own personal touch to the finished product.

## Environment

Coating with zinc is the best way to protect iron and steel from rust, both for economic and ecological reasons. In a society concerned with sustainable development, the metal zinc will play a significant role. Powder coating is the most environmentally friendly option for additional protection and coloring of the zinc coating. Powder coating is completely free of solvents, requires less energy in the manufacturing process, and can be applied to products with less waste than any other coating. Nearly one hundred percent of the overspray material can be recycled.

## Lifespan

Dutch studies show that the lifespan of the system can be calculated using the

following formula:

$$LT = K(LZn+LM):$$

LT = The lifespan of the duplex system in years

LZn = The lifespan of the zinc coating in years in the specific environment and with hot-dip galvanizing alone.

LM = The estimated lifespan of the paint coating if applied directly to steel.

K = Environment-dependent synergy factor with a value set to:

- 1,5 when the system is exposed to environment class C4 and C5, or is permanently submerged in seawater.
- 1,6 - 2,0 for exposure in environment class C3, or when the system is wet less than 60% of the time.
- 2,1 - 2,3 for exposure in environment class C2.



*Our test marina at Strømpeneset, Ørsta Municipality, Møre og Romsdal. Classic walkable finger with grating deck, swim and safety ladder*

# Classic fingers and booms

## Hot-dip galvanized

- Good buoyancy - unsinkable pontoons
- Silent hinges
- Offered with wooden deck or grating deck
- Easy installation and adjustment
- Simple maintenance
- Hot-dip galvanized finish



Walkable pontoon, HR, with wooden deck, grating triangle plate, fendering, and swim and safety ladder. Two-pipe



Walkable finger, two-pipe



Mooring boom, one-pipe



Walkable boom, two-pipe



Connection to steel pontoon.



Connection to concrete pontoon.



Classic finger with grating deck.

### Walkable finger

Fingers are designed with a unique shock-absorbing frame. All variants (types and lengths) are full-scale tested in controlled forms. Classic is a fully welded model, where the steel parts are hot-dip galvanized. This gives the steel material a lifespan of 20-25 years.

### Decking

Wooden deck and grating deck

### Hinges

Silent, springy rubber couplings.  
Can be easily adjusted continuously to the desired width.  
Patented.

### Lengths

Walkable finger (60 cm) available in lengths of 5 m, 6 m, 7 m, 8 m, 10 m and 12 m.

Walkable boom (30 cm) available in lengths of 6 m and 8 m.  
Mooring boom (10 cm) available in 5 m, 6 m, 7 m, 8 m and 10 m.

### Diagonal brace

Diagonal braces for fingers are essential to prevent overloading at the pontoon connections. Our warranty requires at least one diagonal brace for lengths of 7 meters and above, and two for lengths of 10 meters and above. Lengths up to 6 meters can remain straight. For booms, the limitation is the main beam itself, so only one diagonal brace is needed regardless of length.

### Additional equipment

Fendering, grating triangular plate, Neptune's trident, safety and swim ladder.

## Walkable finger, Classic, width 60 cm Wooden deck

Part. nr.	Description	Dimension	Floater	Weight	Price
10005157	Walkable finger, Classic, R	5,15 m	1 x 600E	167 kg	19 079
10005161	Walkable finger, Classic, HR	5,15 m	1 x 600E	188 kg	21 094
10005165	Walkable finger, Classic, VR	5,15 m	1 x 600E	188 kg	21 094
10005169	Walkable finger, Classic, DT	5,15 m	1 x 600E	209 kg	23 437
10005181	Walkable finger, Classic, R	6,15 m	1 x 600E	210 kg	19 126
10005185	Walkable finger, Classic, HR	6,15 m	1 x 600E	231 kg	21 141
10005189	Walkable finger, Classic, VR	6,15 m	1 x 600E	231 kg	21 141
10005193	Walkable finger, Classic, DT	6,15 m	1 x 600E	252 kg	23 484
10005201	Walkable finger, Classic, HR	7,15 m	1 x 600E	260 kg	28 194
10005205	Walkable finger, Classic, VR	7,15 m	1 x 600E	260 kg	28 194
10005209	Walkable finger, Classic, DT	7,15 m	1 x 600E	281 kg	30 511
10005219	Walkable finger, Classic, HR	8,15 m	1 x 600E	288 kg	29 055
10005223	Walkable finger, Classic, VR	8,15 m	1 x 600E	288 kg	29 055
10005227	Walkable finger, Classic, DT	8,15 m	1 x 600E	309 kg	31 327
10005235	Walkable finger, Classic, HR	10,15 m	2 x 600E	372 kg	35 369
10005239	Walkable finger, Classic, VR	10,15 m	2 x 600E	372 kg	35 369
10005243	Walkable finger, Classic, DT	10,15 m	2 x 600E	393 kg	37 530
10005321	Walkable finger, Classic, DT *	12,15 m	2 x 600E + 1 x 630E	583 kg	60 048

Prices are indicative and exclude VAT. Please contact the seller for a price quote.  
\*Recommended for installation only on concrete pontoons. Delivered with grating in triangular section.

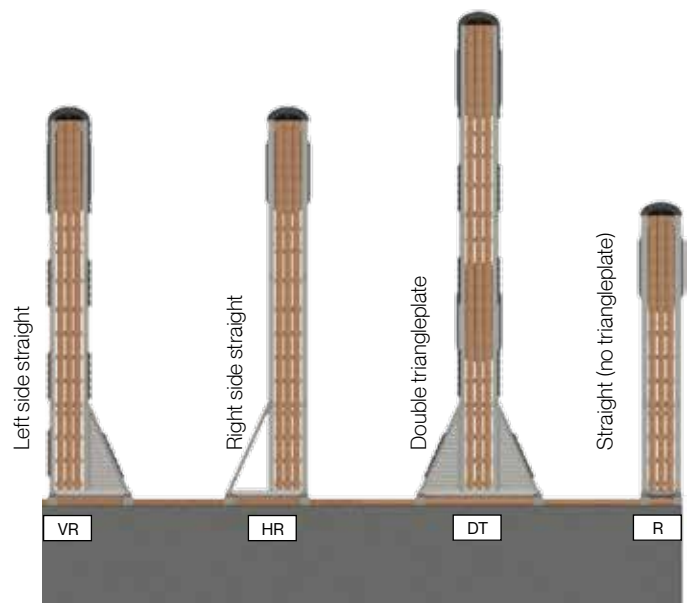
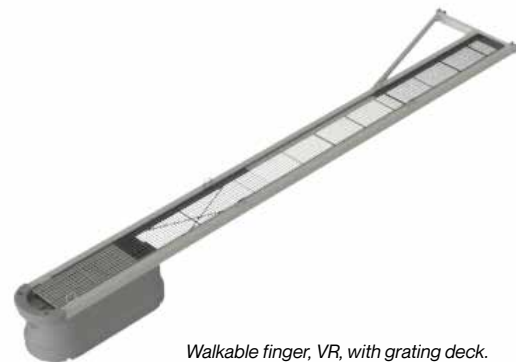


Illustration of walkable finger, Classic, showing the placement of diagonal brace/triangle grating.

## Grating deck

Part. nr.	Description	Dimension	Floater	Weight	Price
10005160	Walkable finger, Classic, R	5,15 m	1 x 600E	182 kg	21 280
10005164	Walkable finger, Classic, HR	5,15 m	1 x 600E	203 kg	23 296
10005168	Walkable finger, Classic, VR	5,15 m	1 x 600E	203 kg	23 296
10005172	Walkable finger, Classic, DT	5,15 m	1 x 600E	224 kg	25 639
10005184	Walkable finger, Classic, R	6,15 m	1 x 600E	192 kg	23 136
10005188	Walkable finger, Classic, HR	6,15 m	1 x 600E	213 kg	25 152
10005192	Walkable finger, Classic, VR	6,15 m	1 x 600E	213 kg	25 152
10005196	Walkable finger, Classic, DT	6,15 m	1 x 600E	234 kg	27 495
10005204	Walkable finger, Classic, HR	7,15 m	1 x 600E	239 kg	33 549
10005208	Walkable finger, Classic, VR	7,15 m	1 x 600E	239 kg	33 549
10005212	Walkable finger, Classic, DT	7,15 m	1 x 600E	260 kg	35 866
10005222	Walkable finger, Classic, HR	8,15 m	1 x 600E	263 kg	33 859
10005226	Walkable finger, Classic, VR	8,15 m	1 x 600E	263 kg	33 859
10005230	Walkable finger, Classic, DT	8,15 m	1 x 600E	284 kg	36 176
10005238	Walkable finger, Classic, HR	10,15 m	2 x 600E	342 kg	41 355
10005242	Walkable finger, Classic, VR	10,15 m	2 x 600E	342 kg	41 355
10005246	Walkable finger, Classic, DT	10,15 m	2 x 600E	363 kg	43 516
10005324	Walkable finger, Classic, DT *	12,15 m	2 x 600E + 1 x 630E	622 kg	64 033

*Prices are indicative and exclude VAT. Please contact the seller for a price quote.  
\*Recommended for installation only on concrete pontoons. Delivered with grating in triangular section.*



Walkable finger, VR, with grating deck.

## Walkable boom, Classic, width 30 cm Grating deck

Part. nr.	Description	Dimension	Floater	Weight	Price
10005178	Walkable boom, Classic, HR	6,10 m	1 x 300A	180 kg	21 372
10005180	Walkable boom, Classic, VR	6,10 m	1 x 300A	180 kg	21 372
10016554	Walkable boom, Classic, HR	8,10 m	1 x 300A + 1 x 300E	247 kg	30 000
10005218	Walkable boom, Classic, VR	8,10 m	1 x 300A + 1 x 300E	247 kg	30 000

Prices are indicative and exclude VAT. Please contact the seller for a price quote.



Walkable boom, VR, with grating deck.

## Mooring boom, Classic, width 10 cm

Part. nr.	Description	Dimension	Floater	Weight	Price
10005153	Mooring bom Classic, HR	5,10 m	1 x 106A	83 kg	8 235
10005155	Mooring bom Classic, VR	5,10 m	1 x 106A	83 kg	8 235
10005173	Mooring bom Classic, HR	6,10 m	1 x 106A	92 kg	8 004
10005175	Mooring bom Classic, VR	6,10 m	1 x 106A	92 kg	8 004
10005197	Mooring bom Classic, HR	7,10 m	1 x 108A	101 kg	10 808
10005199	Mooring bom Classic, VR	7,10 m	1 x 108A	101 kg	10 808
10005213	Mooring bom Classic, HR	8,10 m	1 x 108A	111 kg	11 442
10005215	Mooring bom Classic, VR	8,10 m	1 x 108A	111 kg	11 442
10005231	Mooring bom Classic, HR	10,10 m	1 x 108A + 1 x 106A	197 kg	17 272
10005233	Mooring bom Classic, VR	10,10 m	1 x 108A + 1 x 106A	197 kg	17 272

Prices are indicative and exclude VAT. Please contact the seller for a price quote.



Mooring bom, HR.



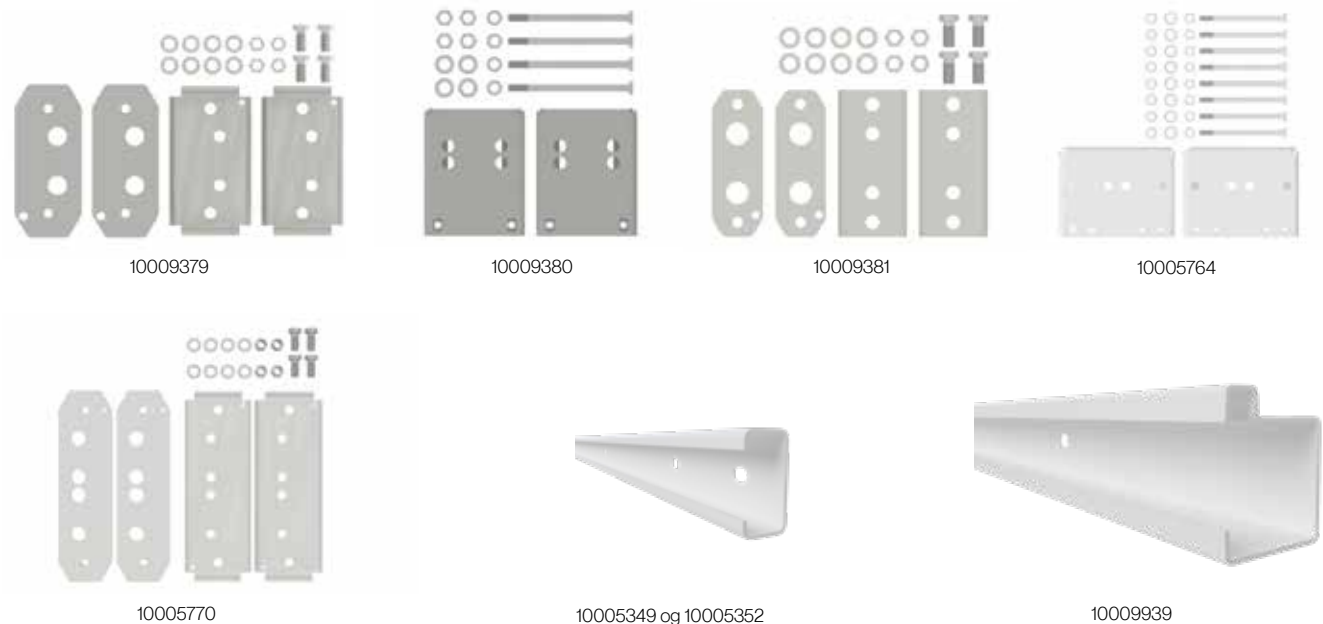
Mooring bom, 10,10 m, HR.

## Hinges, Classic

To install a finger, one pair of hinges required. It can easily be moved to the desired berth.

Part. nr.	Description	Dimension	Weight	Price
10009379	Hinge for pier profile (pair)	110 x 250 mm (backplate)	8 kg	935
10009380	Hinge for wooden fender (pair)	70 x 200 mm (backplate)	7 kg	690
10009381	Hinge for C-profile (pair)	128 x 148 mm	5 kg	615
10005764	Hinge for wooden fender, 12 m finger, CombiCoat®, (pair) *	128 x 148 mm	14 kg	2 357
10005770	Hinge for pier profile, 12 - 15 m finger CombiCoat®, (pair) *	110 x 395 mm (backplate)	16 kg	2 314
10005349	C-profile 80 x 40 x 3 mm, CombiCoat®	6 m	27 kg	2 473
10005352	C-profile 80 x 40 x 3 mm, CombiCoat®	2 m	1 117	
10009939	Pier profile 120 x 100 x 4 mm, CombiCoat®	6 m	71 kg	5 862

Prices are indicative and exclude VAT. Please contact the seller for a price quote.  
\*Recommended for installation only on concrete pontoons.

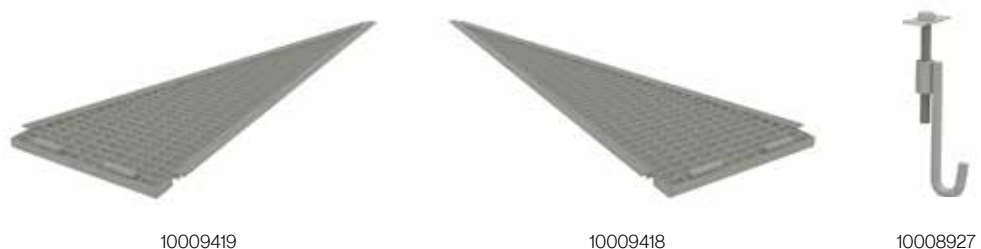


## Triangular grating, Classic

The triangular grating is supplied in a hot-dip galvanized lattice design. It is used in the triangular space between the diagonal brace and the walkable finger, and optionally on the mooring boom, to extend the walkway area towards the dock.

Part. nr.	Description	Dimension	Weight	Price
10009419	Triangular grating, HR, Classic finger and boom 5 - 10 m		18 kg	3 216
10009418	Triangular grating, VR, Classic finger and boom 5 - 10 m		18 kg	3 216
10008927	Hook set for securing triangular grating *			70

Prices are indicative and exclude VAT. Please contact the seller for a price quote.  
\* One set per grating.



## Fender, Classic

Fender for Classic fingers is supplied in polyurethane finish. The fender is delivered with accompanying fastening materials for very simple installation. The standard fendering method is shown in the model below.

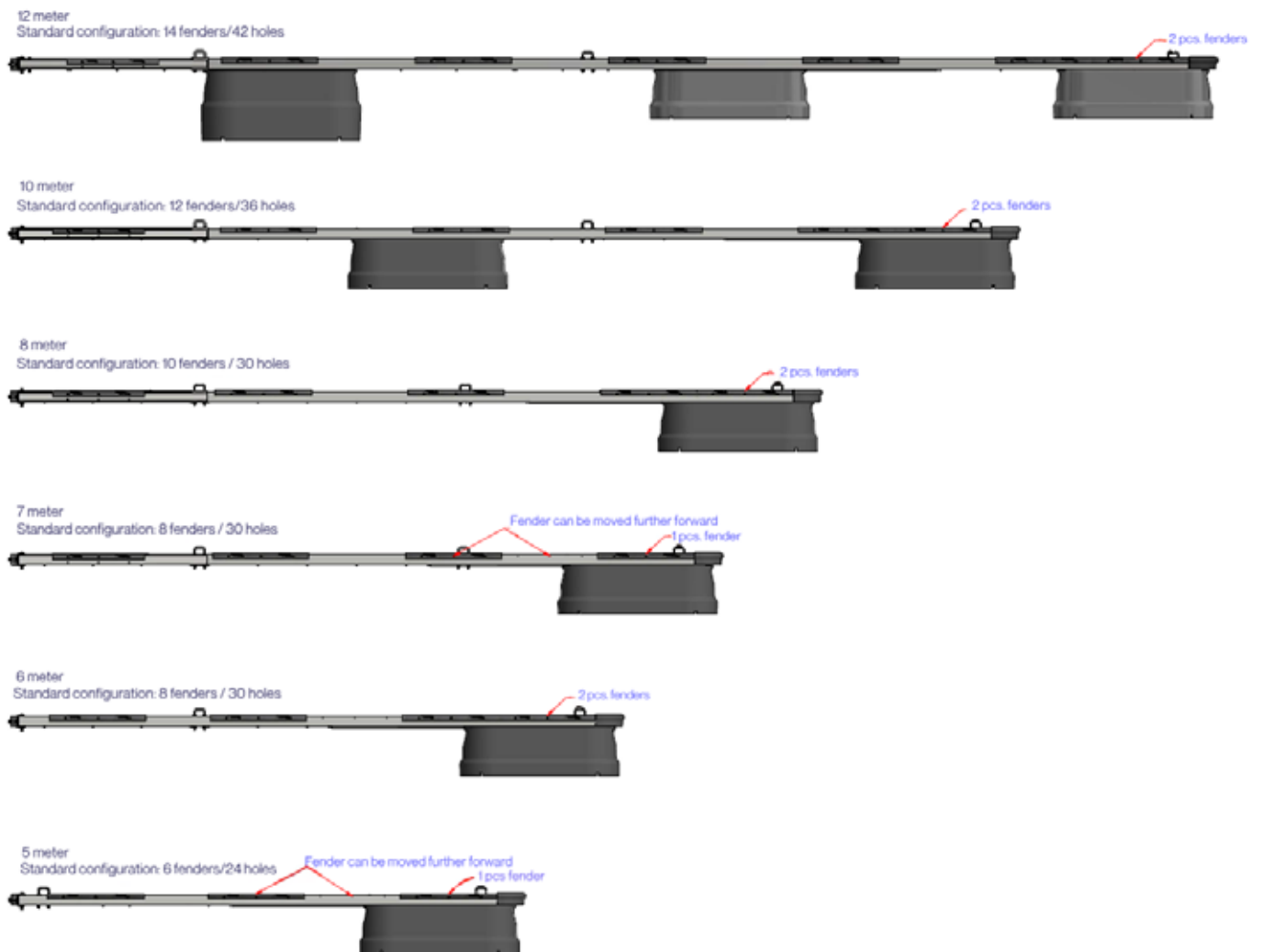
Part. nr.	Description	Dimension	Weight	Price
10009430	Fender for Classic finger and boom	1 m	1 kg	440

*Prices are indicative and exclude VAT. Please contact the seller for a price quote.*



10009430

## Standard setup for point fendering, Classic



## Walkable finger, width 120 cm Wooden deck

Part. nr.	Description	Dimension	Pontong	Weight	Price
10026669	Walkable finger, Ørsta Futura, DT	12 m	2 x 600A/600E/630E	1066 kg	138 421

Prices are indicative and exclude VAT. Please contact the seller for a price quote.  
\*Recommended for installation only on concrete pontoons with pier profile.



Walkable finger, Ørsta Futura, 12 m, width 120 cm, with wooden deck.

## Grating deck

Part. nr.	Description	Dimension	Pontong	Weight	Price
10027545	Walkable finger, Ørsta Futura, DT	12 m	2 x 600A/600E/630E	1179 kg	178 184
10012399	Walkable finger, DT *	15 m	2 x 600A/600E + 4 x 630E	1920 kg	186 681

Prices are indicative and exclude VAT. Please contact the seller for a price quote.  
\*Recommended for installation only on concrete pontoons with pier profile.  
\*Supplied in a hot-dip galvanized lattice design.



Walkable finger, Ørsta Futura, 12 m, width 120 cm, with grating deck.



Walkable finger, 15 m, width 120 cm, with grating deck.

## Hinges for finger 120 cm width.

To install a finger, one pair of hinges required. It can easily be moved to the desired berth.

Part. nr.	Description	Dimension	Weight	Price
10005770	Hinge for pier profile, 12 - 15 m finger, CombiCoat®, (pair) *	110 x 395 mm (backplate)	16 kg	2 314
10009939	Pier profile 120 x 100 x 4 mm, CombiCoat®	6 m	71 kg	5 862

Prices are indicative and exclude VAT. Please contact the seller for a price quote.  
\*Recommended for installation only on concrete pontoons with pier profile.



10005770



10009939



*Strand Kajakk klubb, Høvik, Bærum Municipality. Floating kayak house with storage for kayaks and a rooftop terrace.*

# Gangways

- Attractive design
- Wheelchair accessible
- Stable in use
- Silent connections
- Easy attachment to shore
- Wheels with integrated bearings
- Easy replaceable parts
- CombiCoat®-protected



## For small boat harbour

The lightweight gangway is available in 1 and 1.5 meter widths. Gangways with a width of 1 meter are available in lengths of 4, 6, 8, and 10 meters. Gangways with a width of 1.5 meters are available in lengths of 4, 6, and 8 meters. The wheels are equipped with double-sealed ball bearings.

The lightweight gangway has a maximum net load of 150 kg per square meter and a horizontal net load of 50 kg per meter on the railing.

## For fishing harbour/marina

The heavy-duty gangway is available in a width of 1.5 meters and in lengths of 6, 10, 12, 14, and 16 meters. It is equipped with bogie wheels.

The heavy-duty gangway has a maximum net load of 200 kg per square meter and a horizontal net load of 50 kg per meter on the railing.

## Decking

The gangway is supplied with wooden deck (standard) or non-slip grating decking.

## Assembly

Our standard gangways are delivered as modular kits in sections.

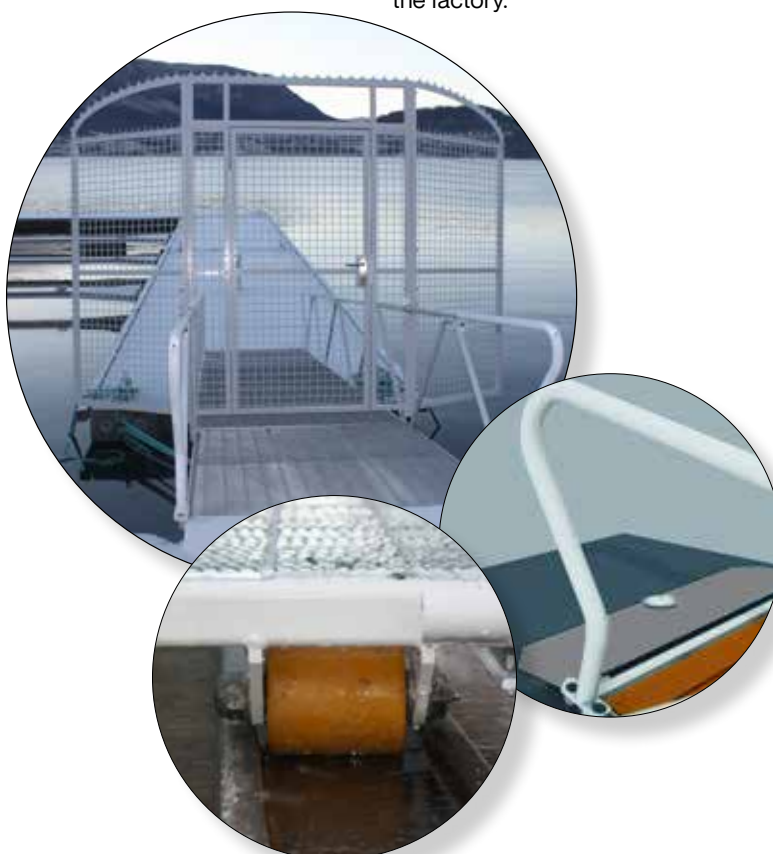
## Additional equipment

Transition plate against shore.

## Large gangways

We offer large gangways in various sizes and lengths according to the customer's needs. Gangways can be customized and dimensioned for most conditions, such as gangways for coastal express quay and drivable gangways.

Our large gangways are usually delivered fully assembled from the factory.



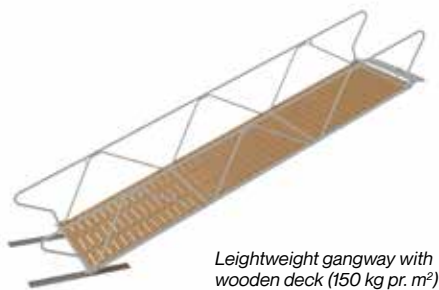
## Gangways Wooden deck

Part. nr.	Description	Dimension	Weight	Price
10005250	Lightweight gangway with wooden deck (150 kg pr. m <sup>2</sup> ) *	4 x 1 m	282 kg	34 703
10005254	Lightweight gangway with wooden deck (150 kg pr. m <sup>2</sup> ) *	6 x 1 m	375 kg	40 522
10005258	Lightweight gangway with wooden deck (150 kg pr. m <sup>2</sup> ) *	8 x 1 m	478 kg	50 582
10005262	Lightweight gangway with wooden deck (150 kg pr. m <sup>2</sup> ) *	10 x 1 m	582 kg	60 641
10005260	Lightweight gangway with wooden deck (150 kg pr. m <sup>2</sup> ) *	8 x 1,5 m	618 kg	58 557
10005610	Heavy-duty gangway with wooden deck (200 kg pr. m <sup>2</sup> ) **	10 x 1,5 m	963 kg	91 068
10005620	Heavy-duty gangway with wooden deck (200 kg pr. m <sup>2</sup> ) **	12 x 1,5 m	1054 kg	99 614

Prices are indicative and exclude VAT. Please contact the seller for a price quote.

\*Gangway designed for small boat harbors.

\*\*Gangway designed for small boat and fishing harbors.



# Gangways

## Grating deck

Part. nr.	Description	Dimension	Weight	Price
10005255	Lightweight gangway with grating deck (150 kg pr. m <sup>2</sup> ) *	6 x 1 m	417 kg	53 205
10005259	Lightweight gangway with grating deck (150 kg pr. m <sup>2</sup> ) *	8 x 1 m	534 kg	67 491
10005263	Lightweight gangway with grating deck (150 kg pr. m <sup>2</sup> ) *	10 x 1 m	652 kg	81 778
10005261	Lightweight gangway with grating deck (150 kg pr. m <sup>2</sup> ) *	8 x 1,5 m	674 kg	83 038
10005611	Heavy-duty gangway with grating deck (200 kg pr. m <sup>2</sup> ) **	10 x 1,5 m	997 kg	121 642
10005621	Heavy-duty gangway with grating deck (200 kg pr. m <sup>2</sup> ) **	12 x 1,5 m	1 150 kg	136 157
10008633	Heavy-duty gangway with grating deck (300 kg pr. m <sup>2</sup> ) ***	12 x 1,5 m	1 462 kg	201 341
10017043	Heavy-duty gangway with grating deck (200 kg pr. m <sup>2</sup> ) ***	14 x 1,5 m	1 565 kg	200 700
10007894	Heavy-duty gangway with grating deck (200 kg pr. m <sup>2</sup> )	16 x 1,5 m	1 608 kg	223 677

Prices are indicative and exclude VAT. Please contact the seller for a price quote.

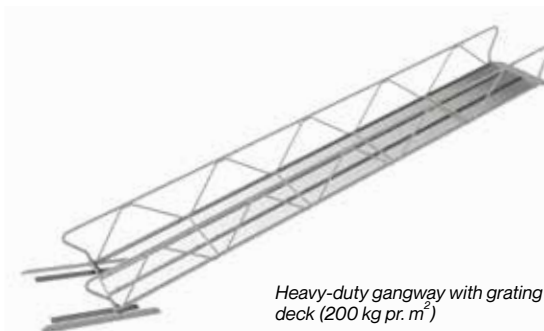
\*Gangway designed for small boat harbors.

\*\*Gangway designed for small boat and fishing harbors.

\*\*\*Gangway with foot and knee lift.



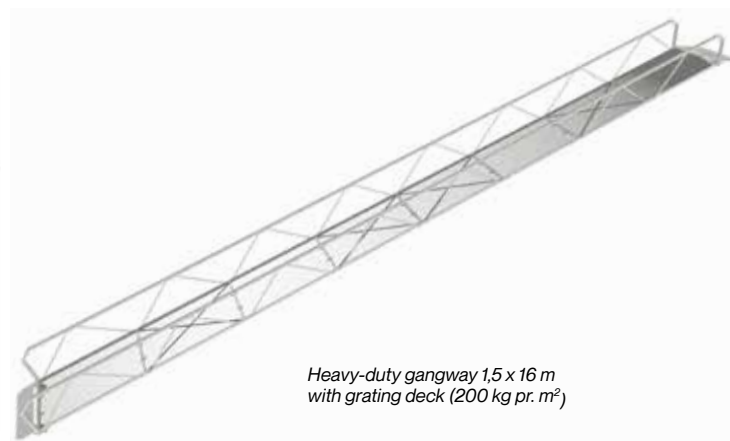
Lightweight gangway with grating deck (150 kg pr. m<sup>2</sup>)



Heavy-duty gangway with grating deck (200 kg pr. m<sup>2</sup>)



Heavy-duty gangway with foot and knee lift, grating deck.



Heavy-duty gangway 1,5 x 16 m with grating deck (200 kg pr. m<sup>2</sup>)

## Spare parts for gangways

Spare parts designed for small boat and fishing harbors.

Part. nr.	Description	Dimension	Weight	Price
10008046	Wheel for gangway		1,5 kg	1 137
10008300	Wheel for gangway (with screws)		2,0 kg	1 223
10008297	Bogie suspension with wheels, heavy-duty gangway		15 kg	2 669
10005608	Tracks for gangway, 2 stk (with screws)	1,5 m	15 kg	2 218
10009014	Shore fastening bolt M33 for gangway		3,0 kg	787
10005587	Cap nut M33, gangway bolt		1,2 kg	713
10005586	Backplate M33, gangway bolt, hot-dip galvanized		3,5 kg	245
10004947	Nut M33, hot-dip galvanized		0,3 kg	24
10005629	End railing, Ø42, lightweight gangway *		17,5 kg	3 809
10005630	End railing, Ø60, lightweight gangway *		25 kg	4 827
10005627	Entrance plate 1 m lightweight gangway against pontoon/shore		19,5 kg	5 405
10005628	Entrance plate 1,5 m lightweight gangway against pontoon/shore		44 kg	6 577

*Prices are indicative and exclude VAT. Please contact the seller for a price quote.*



10008046



10008300



10008297



10005608



10009014



10005587



10005586



10004947



10005629



10005630



10005627



10005628

## Spare parts for gangways

Spare parts designed for small boat and fishing harbors.

Part. nr.	Description	Dimension	Weight	Price
10009653	Securing gangway, wire, for concrete pontoon**		2,5 kg	4 528
10009688	Securing gangway, wire, for steelpontoon **		1,4 kg	1 365
10005247	2 m extension lightweight gangway with wooden deck (150 kg pr. m <sup>2</sup> )	2 x 1 m	104 kg	13 832
10005252	2 m extension lightweight gangway with grating deck (150 kg pr. m <sup>2</sup> )	2 x 1 m	118 kg	19 644
10005248	2 m extension lightweight gangway with wood deck(150 kg pr. m <sup>2</sup> )	2 x 1,5 m	104 kg	15 934
10016806	2 m extension lightweight gangway with grating deck (150 kg pr. m <sup>2</sup> )	2 x 1,5 m	118 kg	24 290
10005624	Guidance for heavy-duty gangway, 2 pieces		22 kg	6 722

Prices are indicative and exclude VAT. Please contact the seller for a price quote.

\*Supplied with 2 end railings and screws.

\*\*Supplied with wire and parts for fastening to gangway and pontoon.



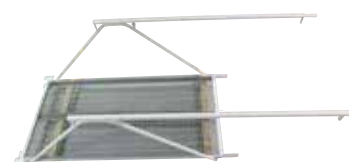
10009653



10009688



10005247



10005252



10005248



10016806



10005624

# Large gangways

## Large gangways

We supply large gangways in various sizes and lengths to suit customer needs. The gangways have a robust construction, are stable in use, and can be customized and engineered for most conditions. For example, gangways for Hurtigruten quay and vehicular (drivable) gangways.

The gangways feature an attractive design and are easy to maintain.



*Imes Eiendom AS, Tromsø: A robust quay measuring 6 x 22 m, with a 1,2 m freeboard, and a drivable gangway measuring 3 x 13,5 m rated for a 4-tonne axle load.*

## Decking

Supplied with a slip-resistant grating deck as standard. Other decking options are available on request.

## Installation

Our large gangways are usually delivered fully assembled from the factory.

Price on request.



*Mowi, Rovde in Vanylven: Gangway, 16 x 2,2 m, with grating deck and an additional side section for easy transport of fish to the boat.*



*Secora AS, Sør-Tverrfjord: Gangway 25 m long, 2 m wide, supplied with a slip-resistant, snow-free grating deck. Hot-dip galvanized finish.*



*Betonmast Telemark AS: Gangway 17 m long, 2 m wide, supplied with composite decking. Painted finish with CombiCoat® protection.*



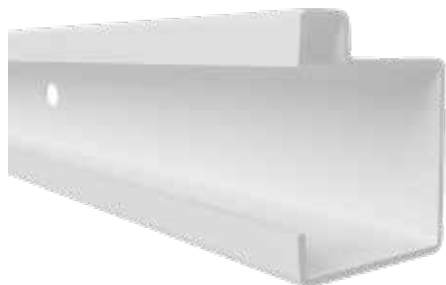
*Helgeland Marinasystemer, Herøy in Nordland: Drivable gangway 3 x 12 m with steelgrating. Hot-dip galvanized finish.*



*Skanska Norge AS - Nyhavna Fire Station: Gangway 20 m long, 2 m wide and supplied with steelgrating. Painted finish with CombiCoat® protection.*

# Pier profile

Pier profile for installation on concrete pontoons, ensuring easy, stepless attachment for walkable fingers and booms.



- Full flexibility
- Easy installation
- Superior strength
- CombiCoat®- treated steel
- Long lifespan
- Low maintenance

## Fully flexibility

By replacing wooden fenders with pier profile on concrete pontoons, you achieve full flexibility when installing fingers, with continuous lateral adjustment.

## Installation

The profile is fastened, like the wooden fender, with through-bolts. It can also be installed on other pontoons og quays.

## Material

The pier profile is made of steel, making it stronger and more robust than a wooden fender. Low maintenance.

## Length

The pier profile is available in standard lengths of 6 m. Dimensions 120 x 100 x 4 mm. Can be supplied in other lengths to suit your pontoon.

## Long lifespan

The pier profile is CombiCoat®-protected for extra-long lifespan. The profile lasts as long as the concrete pontoon itself, unlike traditional wooden fenders, which typically need to be replaced once or twice over the pontoon's lifespan.





*Our testmarina at Strømpeneset, Ørsta Municipality, Møre og Romsdal. Lightweight gangway with grating deck and gate.*

# Gate

## Application

Gate for our gangways are available in widths of 1,0 m and 1,5 m. The gate comes in two versions: for mounting on the gangway or on the shore abutment.

Ørsta's unique surface treatment: the CombiCoat®-process.

marina name, numbering of piers etc.

## Locking

Acid-resistant stainless steel lock case. Option for an electronic lock.

## Materials and surface finish

The gate is made of steel and is virtually maintenance-free, thanks to Vik

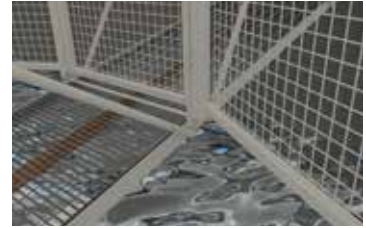
## Sign

Space for installation of sign with the

- Mounting on gangway or shore abutment.
- Lockable door
- Attractive design
- CombiCoat®-protected
- Space for logo sign



Mounting on shore abutment.

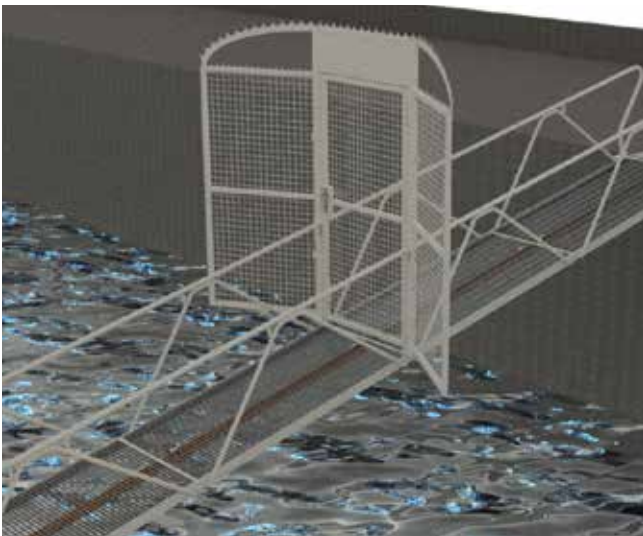


Mounting on gangway.

## Gate for gangway

Part. nr.	Description	Weight	Price
10007999	Gate for gangway 1 m (150 kg pr. m <sup>2</sup> )	105 kg	37 151
10008281	Gate for shore mounting, 1 m	110 kg	42 164
10007977	Gate for gangway 1,5 m (150 kg pr. m <sup>2</sup> )	132 kg	44 522
10008282	Gate for shore mounting, 1,5 m	134 kg	47 661
10008780	Gate for heaavy-duty gangway, 1,5 m	132 kg	47 941
	Sign for gateway		3 000

Prices are indicative and exclude VAT. Please contact the seller for a price quote.



Gate for mounting on the gangway.



Gate for mounting on the shore abutment.



*Our testmarina at Strømpeneset in Ørsta with concrete breakwaers and Ørsta Futura walkable fingers.*

# Mooring

## Parts for tensioning and mooring

Part. nr.	Description	Dimension	Weight	Price
10005282	Tensioning wire, price pr. m.	0,62 inch	1,3 kg	108
10010079	PUR fender for concrete pontoon	185 x 70 x 250 mm	7,1 kg	3 742
10005774	Wire rope clamp, complete, for 4 wires		33 kg	10 870
10006694	Mooring eye at end of steel pontoon, 1 pair		5,3 kg	1 872
10005329	Shore mooring eye for concrete pontoon, 1 pair *		12,5 kg	1 528
10005327	Shore mooring bracket for concrete wall, 1 pair		8,0 kg	3 843
10006704	Mooring eye for steel pontoon, Ørsta Futura™ **		1,3 kg	692
10002167	Eyebolt 24 x 300mm		2,2 kg	338

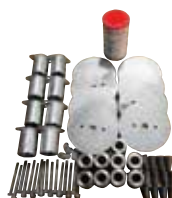
Prices are indicative and exclude VAT. Please contact the seller for a price quote.  
 \* Shore mooring eye (bolt M30 x 330 mm) for use in the anchor recess of a concrete pontoon.  
 \*\*Mooring eye for steel pontoon. Installed at the center of the pontoon.



10005282



10010079



10005774



10006694



10005329



10005327



10006704



10002167

## Mooring block and damping weight

The mooring blocks have an 80 mm plastic cast in U-shape. This means that the mooring line is pulled through the plastic tube and tied to the rope again. With this system, you do not have to attach the rope to steel brackets that will rust after few years in the sea. Material: Concrete C35.

Part nr.	Description	Weight	Price
10005725	Mooring block 1 000 kg	1 000 kg	5 390
10005726	Mooring block 1 800 kg	1 800 kg	7 120
10005724	Damping weight 35 kg	35 kg	318

*Prices are indicative and exclude VAT. Please contact the seller for a price quote.*



Mooring block.



Damping weight.

## Mooring chain

Manufactured from normalized steel, electric-welded uncoated. Supplied with a work certificate. Marked in accordance with the Norwegian Ministry of Fisheries regulations. Price is quoted per meter. Supplied in 30 m lengths.

Part nr.	Description	Weight	Price
10005712	Mooring chain Ø=16 mm, VZN, price pr. meter	4,7 kg	283
10005713	Mooring chain Ø=19 mm, VZN, price pr. meter	6,5 kg	400
10005714	Mooring chain Ø=25 mm, tarred, price pr. meter	10 kg	696
10005716	Mooring chain Ø=32 mm, tarred, price pr. meter	19 kg	871

*Prices are indicative and exclude VAT. Please contact the seller for a price quote.*



## Rope

Does not rot and is resistant to most acids and alkalis. Price is quoted per meter. Supplied in 110 m lengths.

Part nr.	Description	Weight	Price
10005707	Rope, danline Ø=28 mm, price pr. meter	0,35 kg	40
10005708	Rope, danline Ø=32 mm, price pr. meter	0,50 kg	51
10005710	Rope, danline Ø=36 mm, price pr. meter	0,60 kg	61

*Prices are indicative and exclude VAT. Please contact the seller for a price quote.*



## Shackle

Part nr.	Description	Weight	Price
10005719	Shackle 5/8" for 16mm mooring chain	0,7 kg	127
10005721	Shackle 7/8" for 19 og 25mm mooring chain	1,7 kg	261

Prices are indicative and exclude VAT. Please contact the seller for a price quote.



10005719



10005721

## Shock absorber

Part nr.	Description	Weight	Price
10005782	Shock absorber, Inmare, 700 kg	4,3 kg	3 292
10005783	Shock absorber, Inmare, 1400 kg	16,5 kg	6 168
10005784	Shock absorber, Inmare, 2100 kg	17,5 kg	9 055
10021937	Shock absorber, 10 tonne	14 kg	12 644

Prices are indicative and exclude VAT. Please contact the seller for a price quote.



10005782



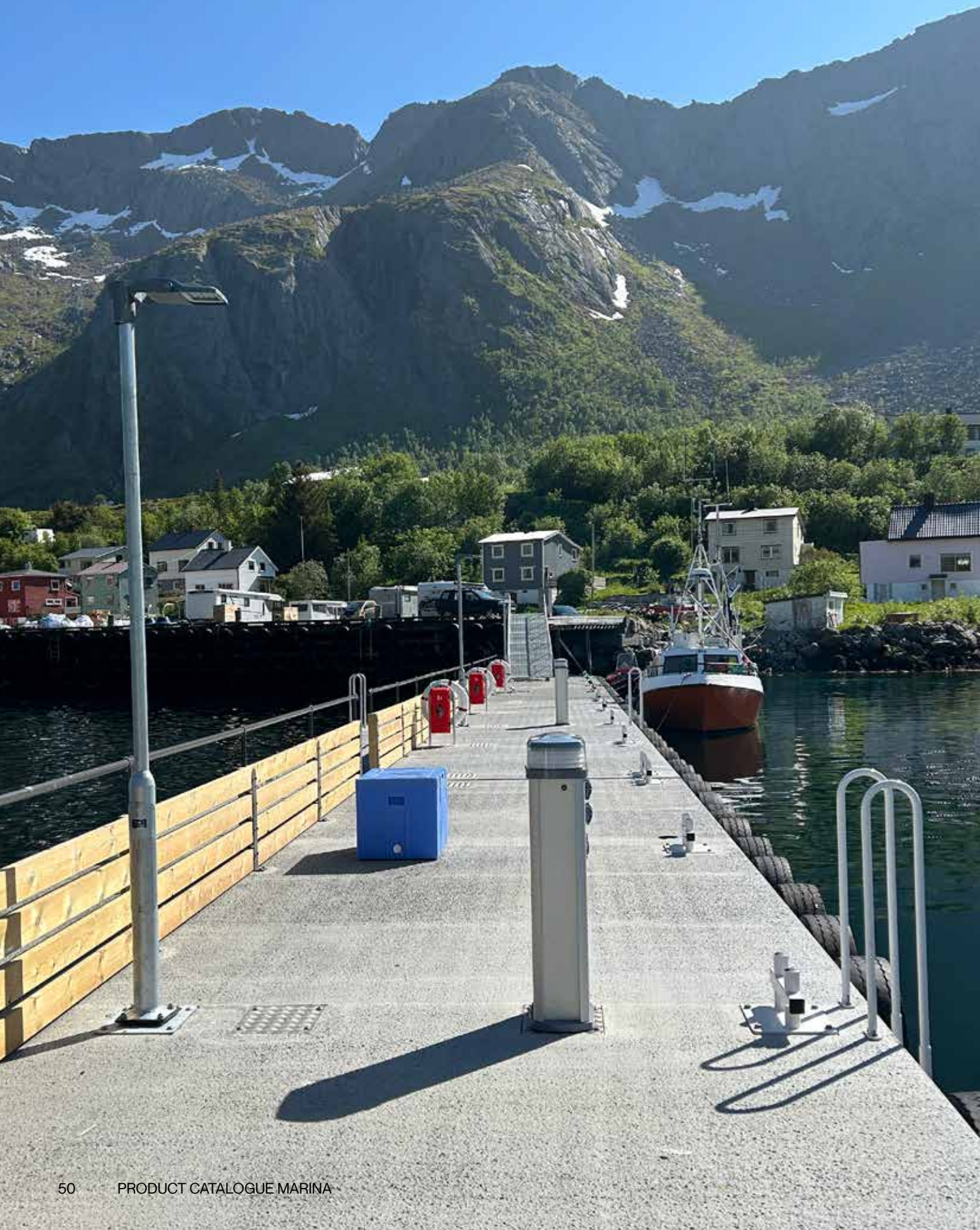
10005783



10005784



10021937



# Water Water pedestals

Water pedestals

Part nr.	Description	Weight	Price
10005741	Stand with hose reel for pier profile/ steel pontoon	31 kg	10 066
10012123	Stand with hose reel	27 kg	9 809
10005298	Stand with bracket for 30 m hose, pier profile/ steel pontoon	36 kg	6 210
10005300	Stand with bracket for 30 m hose, concrete pontoon	33 kg	5 911
10005294	Bracket with hose and screws	10 kg	1 245
10005740	Hose reel Seijsener with 30 m hose	10,2 kg	6 516
10005744	Hose 1/2", 30 m	5,5 kg	1 633
10005745	Hose reel Seijsener with 30 m hose and water outlet	11 kg	7 207
10005743	O-ring, rubber, for hose reel	2 gram	65

Prices are indicative and exclude VAT. Please contact the seller for a price quote.



10005741



10012123



10005298



10005300



10005294



10005740/  
10005745



10005744



10005743



*Vevang Småbåtlag, a great marina right by Atlantic Ocean Road, consisting Classic steel ponton and walkable finger with wooden decking.*

# Safety

Good safety can save lives. The lifebuoy stand can be installed on most installations and is designed to accommodate a fire extinguisher cabinet and/or a hose reel alongside the lifebuoy, or with fire extinguisher cabinet and hose reel.

Part. nr.	Description	Weight	Price
10009720	Lifebuoy with wall bracket	5 kg	2 241
10009723	Lifebuoy with bracket for gangway	6 kg	2 415
10010003	Stand with lifebuoy	21 kg	7 776
10010507	Stand with lifebuoy fire extinguisher cabinet*	25 kg	9 223
10010508	Stand with lifebuoy and hose reel	32 kg	14 047
10010509	Stand with fire extinguisher cabinet and hose reel*	31 kg	12 238
10022257	Fire extinguisher cabinet*	21 kg	5 419
10012123	Stand with hose reel	27 kg	10 625

*Prices are indicative and exclude VAT. Please contact the seller for a price quote.  
\*Dimensions fire extinguisher cabinet: H: 62 cm, W: 24 cm, D: 20 cm, (without fire extinguisher).*



10009722/  
10009723



10010003



10010507



10010508



10010509



10022257



10012123

## Cover strip for concrete pontoon

Cover strip for the gap between concrete pontoons. Prevents objects from falling through the gap and ensures safe, secure passage.

Part. nr.	Description	Dimension	Weight	Price
10010159	Cover strip, grey	2,4 m	7,4 kg	1 112
10010158	Cover strip, grey	3,0 m	6,2 kg	1 390
10010157	Cover strip, grey	4,0 m	6,8 kg	1 700

*Prices are indicative and exclude VAT. Please contact the seller for a price quote.*



10010159 / 10010158 / 10010157

## Ladders

The safety ladder is designed for our steel and concrete pontoons, but can also be installed on other structures.

Part nr.	Description	Weight	Price
10009054	Safety ladder 1,5 m, pier profile	43 kg	6 259
10027849	Safety ladder 2,5 m, pier profile	49 kg	9 689
10009498	Safety ladder 1,5 m, steel pontoon, end, Ørsta Futura™	37 kg	5 406
10022439	Safety ladder 1,5 m, steel pontoon, end, Classic	31 kg	5 869
10009065	Safety ladder 1,5 m, wooden fender	37 kg	6 437
10009066	Safety ladder 2,5 m, wooden fender	50 kg	10 103
10009392	Safety ladder 1,5 m, quay	27 kg	5 338
10009064	Safety ladder 2,5 m, quay	39 kg	8 752
10009056	Safety ladder 3,5 m, quay	48 kg	12 369

*Prices are indicative and exclude VAT. Please contact the seller for a price quote.*



10009054 og  
10027849



10009498 og  
10022439



10009065 og  
10009066



10009392, 10009064  
og 10009056

## Plastic strip for ladder

Plastic step strip for the safety ladder if it is to be used as a bathing ladder.

Part nr.	Description	Weight	Price
10018767	Plastic step strip, safety ladder	1,0 kg	280
10018810	Plastic step strip, splice, safety ladder	0,7 kg	186

*Prices are indicative and exclude VAT. Please contact the seller for a price quote.*



10018767 / 10018810

## Ladder, Classic

Swim ladder for Classic walkable finger. The ladder is easily installed at the outer end of the finger.

Part nr.	Description	Weight	Price
10006685	Swim ladder for walkable finger, Classic, rød	12 kg	3 499

Prices are indicative and exclude VAT. Please contact the seller for a price quote.



Illustration



10006685

## Fold-down ladders

Fold-down ladder is designed for our steel and concrete pontoons, but can also be installed on other structures. It is easy to see and reach from the water. Simply pull the ladder down to climb back onto the pontoon.

Part nr.	Description	Weight	Price
10009926	Fold-down ladder for wooden fender, 4 steps, red	8,5 kg	1 965
10009937	Fold-down ladder for pier profile, 4 steps, red	11,5 kg	2 265
10011598	Fold-down ladder for pier profile, 6 steps, red	13,4 kg	2 830
10011852	Fold-down ladder for pier profile, with grab handles, 4 steps, red	11 kg	4 458
10009988	Fold-down ladder for walkable finger, 4 steps, red	8 kg	1 905
10017698	Fold-down ladder for wooden fender, 6 steps, red	11 kg	2 529
10010828	Grab handles for fold-down ladder, wooden fender, red	2,2 kg	2 342

Prices are indicative and exclude VAT. Please contact the seller for a price quote.



10009926



10009937



10011598



10011852



10009988



10017698



10010828



# Spare parts and accessories

## Bollards for pontoons

Mooring bollards and mooring eye for installation on our steel and concrete pontoons.

Part nr.	Description	Weight	Price
10004999	Mooring bollard for steel pontoon (3x M16x45 screws)	2,6 kg	1 140
10005307	Mooring bollard, small, for concrete pontoon (2x M16x180 skruer)	5,2 kg	1 357
10005308	Mooring bollard for concrete pontoon, 6 tonnes (4x M16x40 skruer)	18,4 kg	2 206
10010223	Bollard, 20 tonnes, excl. fasteners	60 kg	12 945
10011003	Bollard, 30 tonnes, excl. fasteners	75 kg	14 667
10005134	Extra mooring eye for steel pontoon	5,2 kg	962

Prices are indicative and exclude VAT. Please contact the seller for a price quote.



10004999



10005307



10005308



10010223 / 10011003



10005134

## Couplings for steel pontoon

Corner brackets and couplings for steel pontoons Ørsta Futura, Classic and older steel pontoon with blue pontoons.

Part nr.	Description	Weight	Price
10005310	Corner bracket for steel pontoon, Ørsta Futura and older model, cc*	7,3 kg	1 180
10006705	Pontoon coupling for steel pontoon, Ørsta Futura and older model, complete**	4,6 kg	1 342
10010377	Pontoon coupling for steel pontoon, Classic, complete**	3,5 kg	1 423
10005313	Pontoon coupling, grey	0,6 kg	845
10005311	Clamp for pontoon coupling, Ørsta Futura, cc	1,5 kg	227
10022260	Clamp for pontoon coupling, Classic, vzn	1,4 kg	273

Prices are indicative and exclude VAT. Please contact the seller for a price quote.

\* Corner bracket is supplied without coupling and screws.

\*\* Pontoon coupling for steel pontoon is supplied with fastening hardware.



10005310



10006705



10010377



10005313



10005311



10022260

## Floater, Ørsta Futura™

Part nr.	Description	Floater	Weight	Price
10005384	Floater 106A, 4-6 m single mooring boom (grey)	106A	12,5 kg	2 202
10005385	Floater 108A, 7-8 m single mooring boom (grey)	108A	13,5 kg	2 494
10005387	Floater 300E, walkable boom (grey)	300E	20 kg	3 518
10005388	Floater 300A, walkable boom (grey)	300A	22 kg	3 625
10005389	Floater 600E, walkable finger and steel pontoon (grey)	600E	29 kg	4 965
10005390	Floater 600A, walkable finger (grey)	600A	35,5 kg	5 096
10005391	Floater 630E, walkable finger and steel pontoon (grey)	630E	44 kg	6 107

Prices are indicative and exclude VAT. Please contact the seller for a price quote.



10005384



10005385



10005387



10005388



10005389



10005390



10005391

## Brackets and screws for floater, Ørsta Futura™

Part nr.	Description	Weight	Price
10008344	Attachment for extra floater, walkable finger, 5-8 m	2,5 kg	528
10017782	Attachment for extra floater, walkable finger, 10-12 m	2,3 kg	567
10005394	Suspension bracket for extra floater 600E/630E, pontoon end	23,2 kg	2 939
10005393	Suspension bracket for extra floater 600E/630E, pontoon long side	4,6 kg	575
10005815	Standard kit floater 600A, walkable finger	0,3 kg	145
10005820	Standard kit floater 600A+E, walkable finger	0,9 kg	218
10005816	Standard kit floater 600E/630E, walkable finger	0,7 kg	182
10005817	Standard kit floater 300A, walkable boom	0,3 kg	149
10005818	Standard kit floater 300E, walkable boom	1,1 kg	247
10005819	Standard kit floater 106A/108A, single mooring boom	0,2 kg	136

Prices are indicative and exclude VAT. Please contact the seller for a price quote.

## Hinges, Ørsta Futura™

Hinges for installing walkable fingers and mooring booms. Can easily be slid to the desired berth.

Part nr.	Description	Dimension	Weight	Price
10005753	Hinge set for wooden fender (pcs), CombiCoat®*	128 x 148 mm	6,5 kg	1 037
10005755	Hinge set for pier profile (pcs), CombiCoat®*		7,1 kg	929
10005754	Hinge set for C-profile (pcs), CombiCoat®*		5,1 kg	707
10005349	C-profile 80 x 40 x 3 mm, CombiCoat®	6 m	27 kg	2 473
10005352	C-profile 80 x 40 x 3 mm, CombiCoat®	2 m	9 kg	1 117
10009939	Pier profile 120 x 100 x 4 mm, CombiCoat®	6 m	71 kg	5 862
10005412	Flat bar for hinge (H100), CombiCoat®		0,6 kg	170
10005414	Rubber hinge for finger		0,7 kg	155
10005513	Clamp plate for rubber hinge, CombiCoat®		0,5 kg	100

*Prices are indicative and exclude VAT. Please contact the seller for a price quote.  
\* The hinge set consists of one hinge. For the mounting of one finger, two pair of hinge set is needed.*



10005753



10005755



10005754



10005349 og 10005352



10009939



10005412



10005414



10005513

## Mooring, Ørsta Futura™

Part nr.	Description	Weight	Price
10008384	Mooring bollard, walkable finger, walkable boom and boom, inkl. nuts/washers*	1,6 kg	471
10008385	Mooring bollard, spring, 8 m walkable finger and walkable boom, inkl. nuts/washers	1,5 kg	471
10008500	Mooring bollard, concrete pontoon, inkl. nuts/washers	0,9 kg	599

*Prices are indicative and exclude VAT. Please contact the seller for a price quote.  
\* Mooring bollard, spring, for 10 m walkable finger and walkable boom.*



10008384



10008385



10008500

## Floater, Classic

Part nr.	Description	Floater	Weight	Price
10005384	Floater 106A, 4-6 m single mooring boom (grey)	106A	12,5 kg	2 202
10005385	Floater 108A, 7-8 m single mooring boom (grey)	108A	13,5 kg	2 494
10005387	Floater 300E, walkable boom (grey)	300E	20 kg	3 518
10005388	Floater 300A, walkable boom (grey)	300A	22 kg	3 625
10005389	Floater 600E, walkable finger and steel pontoon (grey)	600E	29 kg	4 965
10005391	Floater 630E, walkable finger and steel pontoon (grey)	630E	44 kg	6 107
10005383	End fender, walkable finger, (grey)		2 kg	1 363

Prices are indicative and exclude VAT. Please contact the seller for a price quote.  
\* 10 m mooring boom has one floater 106A and one floater 108A.



## Brackets and screws for floater, Classic

Part nr.	Description	Weight	Price
10008926	Attachment for extra floater, uttrigger with wooden deck	1,8 kg	392
10009222	Attachment for extra floater, uttrigger with grating deck	4,3 kg	849
10005834	Suspension bracket for extra floater, pontoon end	4,0 kg	964
10005816	Standard kit floater 600E/630E, pontoon long side	0,7 kg	182
10005823	Standard kit floater, walkable finger 5-8 m with wooden deck	0,4 kg	201
10005824	Standard kit floater, walkable finger 5-8 m with grating deck	0,5 kg	200
10005825	Standard kit floater, walkable finger 10 m with wooden deck	1,1 kg	333
10005826	Standard kit floater, walkable finger 10 m with grating deck	1,2kg	328
10005817	Standard kit floater 300A, walkable boom	0,3 kg	149
10005818	Standard kit floater 300E, walkable boom	1,1 kg	247
10005819	Standard kit floater 106A / 108A, single mooring boom	0,2 kg	136
10016576	Standard kit floater, steel pontoon	0,5 kg	178
10005835	Standard kit end fender, walkable finger	0,3 kg	164

Prices are indicative and exclude VAT. Please contact the seller for a price quote.

# Hinges, Classic

Hinges for installing walkable fingers and mooring booms. Can easily be slid to the desired berth.

Part nr.	Description	Dimension	Weight	Price
10009992	Hinge set for wooden fender (pcs)*	128 x 148 mm	6,5 kg	679
10009993	Hinge set for pier profile (pcs)*		7,1 kg	801
10009994	Hinge set for C-profile (pcs)*		5,1 kg	642
10005349	C-profile 80 x 40 x 3 mm, CombiCoat®	6 m	27 kg	2 473
10005352	C-profile 80 x 40 x 3 mm, CombiCoat®	2 m	9 kg	1 117
10009939	Pier profile 120 x 100 x 4 mm, CombiCoat®	6 m	71 kg	5 862
10009365	Flat bar for hinge, Classic, vzn		0,6 kg	109
10005414	Rubber hinge for finger		0,7 kg	155
10005513	Clamp plate for rubber hinge, CombiCoat®		0,5 kg	100

Prices are indicative and exclude VAT. Please contact the seller for a price quote.  
\* The hinge set consists of one hinge. For the mounting of one finger, two pair of hinge set is needed.



10009992



10009993



10009994



10005349 og 10005352



10009939



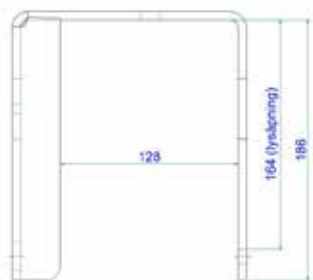
10009365



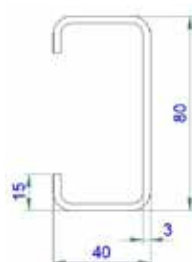
10005414



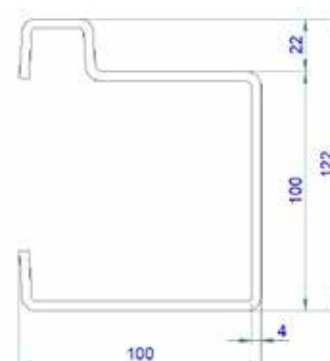
10005513



Sketch for 10009992



Sketch for 10005349 og 10005352



Sketch for 10009939

## Fender

Our fenders are designed to provide continuous fendering along the entire berth, so you can dock the boat without worrying about damage. The attachment prevents the fender from shifting, and the fender material will not mark the hull. The fenders are shaped to deliver excellent protection in the critical area just above the stringer.

Part nr.	Description	Size	Weight	Price
10009960	Bow fender for pier profile	107,5 cm	7,4 kg	1 874
10009961	Bow fender for wooden fender/ concrete pontoon	107,5 cm	6,2 kg	1 752
10009962	Bow fender for C-profile 80 x 40 x 3 mm	107,5 cm	6,8 kg	1 830
10005735	Side fender for 80 x 50 mm profile, single*	80 cm	3 kg	949
10005736	Side fender for 80 x 80 mm profile, single*	80 cm	3,2 kg	967
10009430	Fender for Classic walkable finger and mooring boom	1 m	1 kg	440

*Prices are indicative and exclude VAT. Please contact the seller for a price quote.  
\* For older walkable fingers and mooring booms.*



10009960 / 10009961 / 10009962



10005735 / 10005736



10009430

## Neptun's trident

Neptune's trident keeps mooring lines organized and easy to reach when you arrive at the boat. Made of polyurethane, it is flexible and moves in all directions without risking hull damage. It can be mounted on mooring boom, walkable finger, and steel pontoon. Supplied in heights of 0.7 m and 1.2 m. Available in grey and blue.

Part nr.	Description	Dimensjon	Weight	Price
10005650	Neptun's trident, large, for walkable finger / walkable boom (grey)	1,2 m	4,1 kg	1941
10005651	Neptun's trident, large, for single boom, Ørsta futura (grey)	1,2 m	4,2 kg	1950
10005661	Neptun's trident, large, for single boom, Classic (grey)	1,2 m	4,2 kg	1979
10005660	Neptun's trident, small, for single boom, Classic (grey)	0,7 m	1,8 kg	1284
10005655	Neptun's trident, small, for walkable finger / walkable boom (grey)	0,7 m	1,7 kg	1245
10005656	Neptun's trident, small, for single boom, Ørsta Futura (grey)	0,7 m	1,8 kg	1255
10005652	Neptun's trident, large, for single boom (blue)*	1,2 m	5,5 kg	1553
10005653	Neptun's trident, large, for dobbel boom (blue)*	1,2 m	4,8 kg	1368
10005657	Neptun's trident, small, for dobbel boom (blue)*	0,7 m	3,6 kg	1124

Prices are indicative and exclude VAT. Please contact the seller for a price quote.  
\* For older walkable fingers and mooring booms.



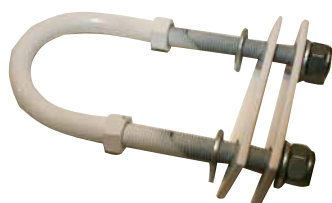
Neptun's trident, small.

Neptun's trident large.

## Mooring, older models

Part nr.	Description	Weight	Price
10005381	Extra mooring, for 80 x 80 mm profile, CombiCoat®	1,9 kg	844
10005382	Extra mooring, for 80 x 50 mm profile, CombiCoat®	1,4 kg	763
10006727	Extra mooring eye, triangular plate, CombiCoat®	1,7 kg	829

Prices are indicative and exclude VAT. Please contact the seller for a price quote.



10005381



10005382

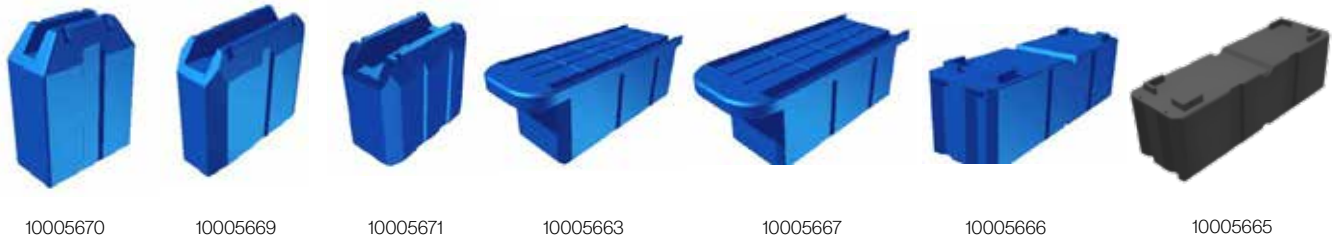


10006727

## Floater, older models

Part nr.	Description	Volume	Weight	Price
10005670	Floater for single mooring boom (blue)	80 l	9 kg	2 047
10005669	Floater for double mooring boom 5-8 m (blue)	140 l	13,5 kg	2 529
10005671	Floater for 10 m mooring boom (blue)	190 l	19 kg	2 704
10005663	Floater for 5-7 m walkable finger (blue)	520 l	33 kg	4 584
10005667	Floater for 8-10 m walkable finger (blue)	530 l	32,5 kg	4 535
10005666	Floater for pontoon/ extra floater for walkable finger (blue)	550 l	33 kg	4 671
10005665	Floater for pontoon/ extra floater for walkable finger (grey)	550 l	33 kg	4 671

Prices are indicative and exclude VAT. Please contact the seller for a price quote.



10005670

10005669

10005671

10005663

10005667

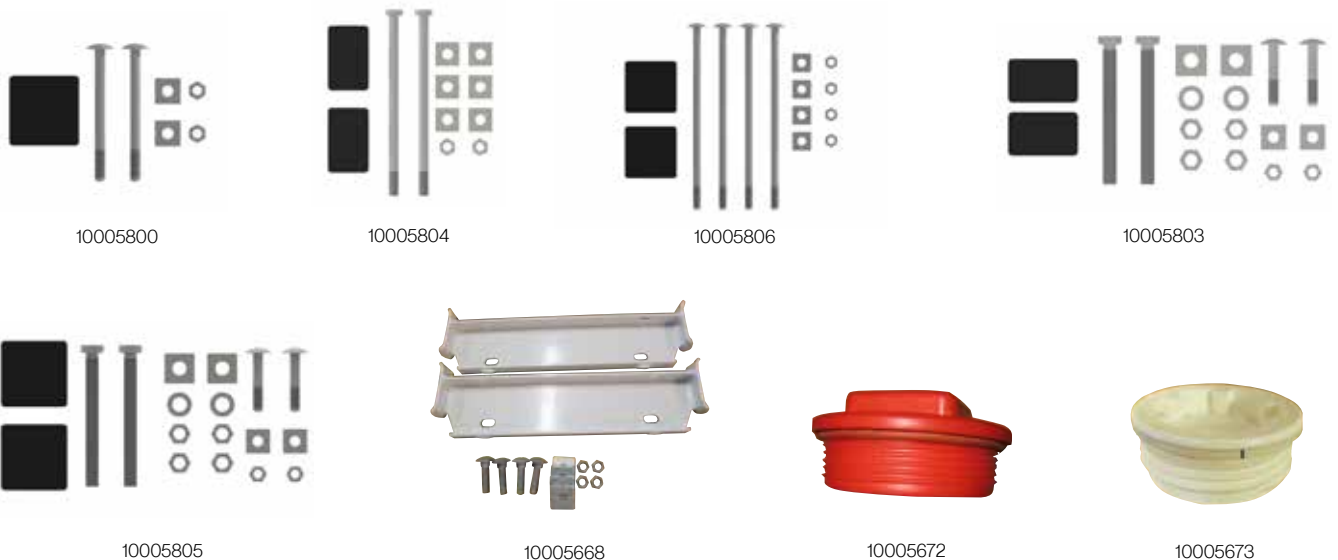
10005666

10005665

## Bracket and screws for floater, older models

Part nr.	Description	Weight	Price
10005800	Standard kit floater, 80l., single mooring boom 4-6 m	0,4 kg	184
10005804	Standard kit floater, 140l., double mooring boom	0,2 kg	247
10005806	Standard kit floater, 190l., double mooring boom 10 m	0,3 kg	261
10005803	Standard kit floater, 520l., walkable finger 5-7 m	1,3 kg	236
10005805	Standard kit floater, 530l., walkable finger 8 m	1,3 kg	227
10005668	Bracket for 550 l floater, walkable finger, CombiCoat®	6,6 kg	1 740
10005672	Screw cap with seal, fine thread, older floater	0,28 kg	95
10005673	Screw cap with seal, coarse-thread, older floater	0,28 kg	95

Prices are indicative and exclude VAT. Please contact the seller for a price quote.



10005800

10005804

10005806

10005803

10005805

10005668

10005672

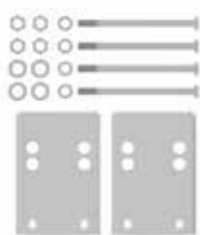
10005673

## Hinges, older models

Hinges for installing walkable fingers and mooring booms. Can easily be slid to the desired berth.

Part nr.	Description	Dimension	Weight	Price
10005768	Hinge for pier profile (pair), CombiCoat®*	128 x 148 mm	8 kg	1 334
10005773	Hinge for C-profile (pair), CombiCoat®*	110 x 250 mm (back plate)	10 kg	1 076
10005772	Hinge for wooden fender (pair), CombiCoat®*	70 x 200 mm (back plate)	6 kg	674
10005758	Hinge set for wooden fender (pcs), CombiCoat®**	128 x 148 mm	6,5 kg	1 108
10005760	Hinge set for pier profile (pcs), CombiCoat®**	110 x 250 mm (back plate)	7,1 kg	979
10005759	Hinge set for C-profile (pcs), CombiCoat®**	70 x 200 mm (back plate)	5,1 kg	778
10005349	C-profile 80 x 40 x 3 mm, CombiCoat®	6 m	27 kg	2 473
10005352	C-profile 80 x 40 x 3 mm, CombiCoat®	2 m	9 kg	1 117
10009939	Pier profile 120 x 100 x 4 mm, CombiCoat®	6 m	71 kg	5 862
10005485	Flat bar for hinge, CombiCoat®		0,6 kg	127
10005488	Rubber hinge for finger		0,5 kg	270
10005513	Clamp plate for rubber hinge, CombiCoat®		0,5 kg	100

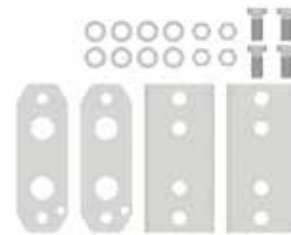
Prices are indicative and exclude VAT. Please contact the seller for a price quote.  
 \*Hinge used on Ørsta Futura finger pontoons and older models. The rubber hinge is not included.  
 \*\*One hinge per set; two hinge sets are required to mount one finger.



10005768



10005773



10005772



10005758



10005760



10005759



10005349 og 10005352



10009939



10005485



10005488



10005513

# Service og inspection

Regular inspection and maintenance of marina installations are essential, especially in autumn and winter when loads are highest.

Insurers are imposing increasingly strict requirements for documented maintenance. We have therefore developed a system that provides a clear overview of maintenance status,

upcoming inspections, and required repairs. The service is available nationwide.

### Maintenance agreement

With our maintenance agreement, we carry out a thorough inspection of your facility. After the visit, you receive a detailed report with prioritized recommendations for corrective

actions. You decide which items to address based on your needs and priorities.

All work is performed by qualified, certified technicians who know the equipment and use only genuine parts. This ensures proper maintenance and a longer service life for your marina.

#### Inspection of concrete pontoon:

- Anchor wells with locking pins
- Wire connections and buffer units
- Anchor chains, shore anchors and tension/trim
- Load-related damage and cracking

#### Inspection of steel pontoon:

- Pontoon connectors
- Fendering
- Anchor chains, shore anchors and anchorage points
- Floats
- Deck surface
- Load-related damage

#### Inspection of gangway:

- Transition/landing plate
- Gangway wheels/rollers, slide blocks and tracks
- Gangway bolt and nut
- Gangway securing
- Handrails

#### Inspection of finger pontoon equipment:

- Fendering
- Bollard and mooring points
- Hinges with bolts and fasteners
- Floats (pontoons)
- Deck surface
- Load-related damage

#### Additional equipment:

- Lifebuoys
- Safety and swim ladders
- Power pedestals
- Water posts and hoses

#### Underwater inspection:

- Moorings/anchor points
- Chains/ropes

*Please contact the seller for a price quote.*

## Contact us

### Service



Christer Øyre  
Service and Installation Manager  
+47 911 87 636  
christer.oyre@vikorsta.no  
Main office Ørsta



Kurt Oskar Fossmark  
Service and Installation Manager  
+47 911 78 248  
kurt.fossmark@vikorsta.no  
Service Department Stavanger



Ole Petter Vik  
Service and Installation Manager  
+47 464 43 834  
ole.petter.vik@vikorsta.no  
Service Department Skarnes

## Sales



Jan Petter Andersen  
Sales Manager  
Telemark, Agder og Rogaland  
+47 991 06 510  
jan.petter.andersen@vikorsta.no  
Departmental office Porsgrunn



Jarle Hirgum  
Sales Manager  
Vestfold, Viken og Hordaland  
+47 907 62 261  
jarle.hirgum@vikorsta.no  
Departmental office Tjøme



Geir-Tore Eriksen  
Sales Manager  
Oslo, Innlandet og Troms  
+47 404 94 647  
geir.eriksen@vikorsta.no  
Departmental office Skarnes



Petter Sandnes  
Sales manager  
Sogn og Fjordane, Møre og  
Romsdal, Trøndelag  
+47 901 05 257  
petter.sandnes@vikorsta.no  
Maine office Ørsta



Torbjørn Slagnes Olsen  
Sales Manager  
Møre og Romsdal, Nordland og  
Finnmark  
+47 476 74 277  
torbjorn.olsen@vikorsta.no  
Maine office Ørsta



Monica Sætre Koppen  
Sales Executive  
+47 918 55 379  
monica.koppen@vikorsta.no



Sonja Aksnes  
Sales and Customer Service  
+47 976 30 804  
sonja.aksnes@vikorsta.no

## Project / Engineering



Anita Ryste  
Project Manager  
+47 970 34 195  
anita.ryste@vikorsta.no



Henriette Husevåg Førde  
Project Engineer  
+47 954 46 945  
henriette.forde@vikorsta.no



Roy Almestad  
Product Manager, MSc  
+47 990 43 911  
roy.almestad@vikorsta.no



Eystein Kipperberg Ose  
CAD Technician  
+47 977 72 336  
eystein.ose@vikorsta.no

## Management



Rune Holstad  
Department Manager  
+47 990 90 491  
rune.holstad@vikorsta.no



*Solnes Båthavn, Sandefjord Municipality.*

**Vik Ørsta AS**  
**P.O. box 193**  
**N-6151 Ørsta**

**+47 70 04 70 00**

**post@vikorsta.no**  
**www.vikorsta.no**

Vik Ørsta AS reserves the right to make product improvements and minor changes to specifications and design without prior notice.

Such changes will not reduce product functionality or quality. Errors and omissions excepted.

For the most up-to-date catalog, please visit our website: [www.vikorsta.no](http://www.vikorsta.no)