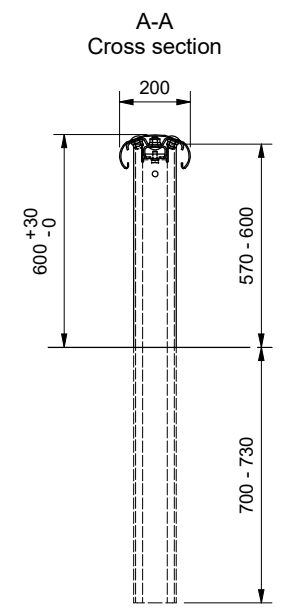
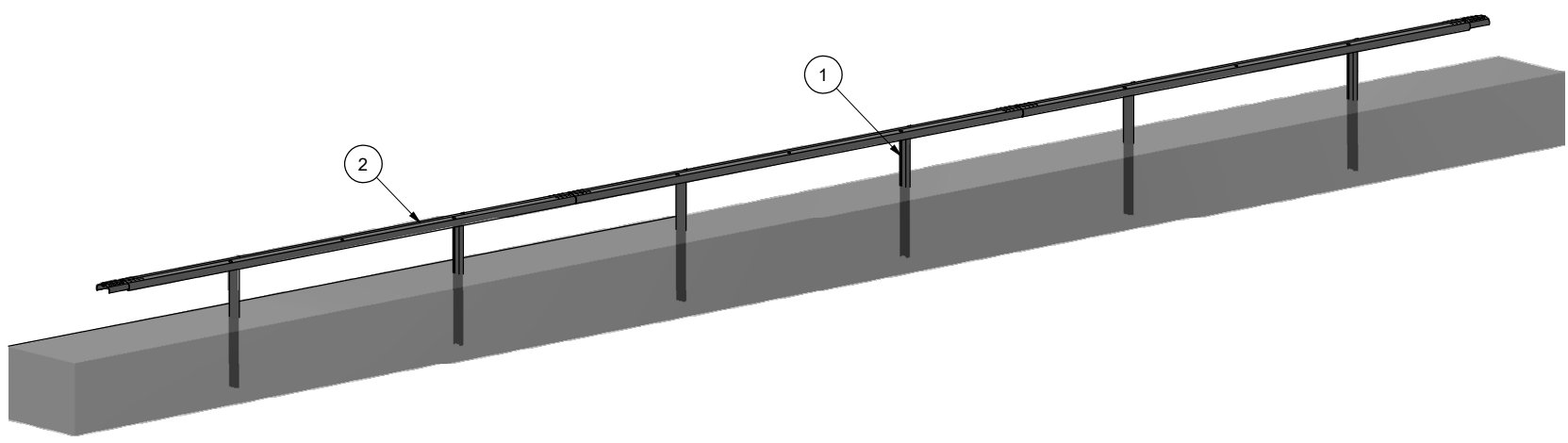
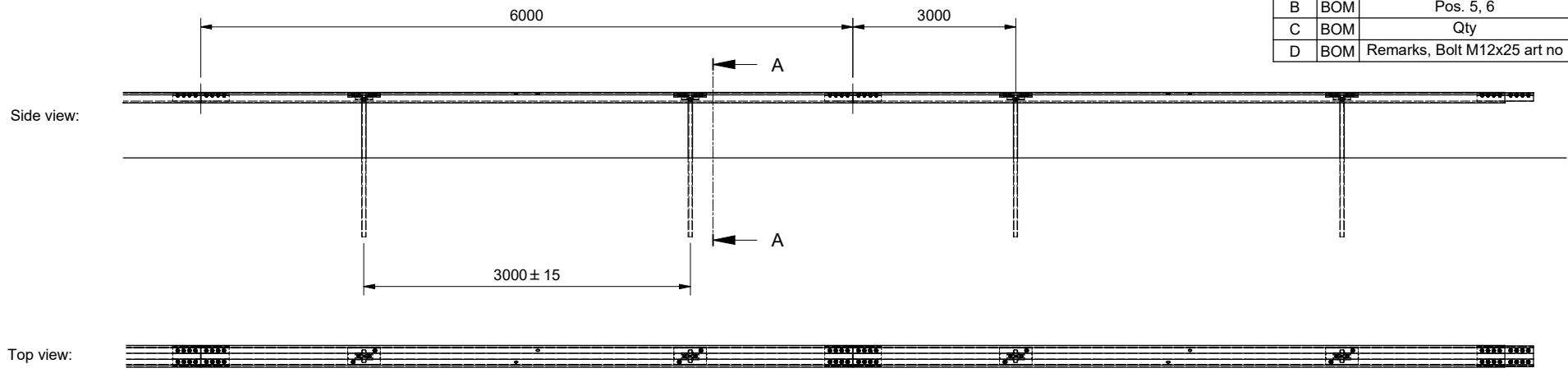


Rev.	Zone	Revision description	Sign.	Date
A	BOM	Added art. 61780	GK	06.05.2019
B	BOM	Pos. 5, 6	GK	14.05.2019
C	BOM	Qty	GK	07.08.2019
D	BOM	Remarks, Bolt M12x25 art no	GK	04.10.2019



9	1/6 m	61768	Joint plate	4,5 kg	1pc included in KIT 61741
8	1/3 m	61786	Top plate	2 kg	1pc included in KIT 61741
7	1/3 m	61789	Bolt M12x25 DIN933 4.6 HDG	0 kg	
6	24/6 m	692316000	Flange nut M16 DIN 6923 8 Isofit HDG	0,1 kg	16pcs included in KIT 61741
5	24/6 m	61769	Bolt M16x30 with rounded head 8.8 HDG	0,1 kg	16pcs included in KIT 61741
4	1/3 m	61787	Mini C 65	0,7 kg	1pc included in KIT 61741
3	1/3 m	61788	T-washer	0,2 kg	
2	1/6 m	61750	Oval open profile 200x100x3 L=5995 cc3/6	52,6 kg	1pc included in KIT 61741
1	1/3 m	61700	C-post 120 L=1300	11 kg	
Pos.	Qty.	Art. nr.	Material type	Mass	Remarks

For assembly details see system assembly drawing 5135700M.
Mass 15 kg/m

Date	27.04.2019	Constr./Drawn by	gk	Scale	A3 - 1 : 100
Calculation		Approved by			
Reference:		Replacement for		Replaced by	

Sheet no 1/1

VIKORSTA
a SAFEROAD company

5135705

Revision **D**

This drawing is our property and must not be used, copied, or made available to others without our consent.

Safeline-M Median Barrier
Posts spacing c/c 3m
System drawing