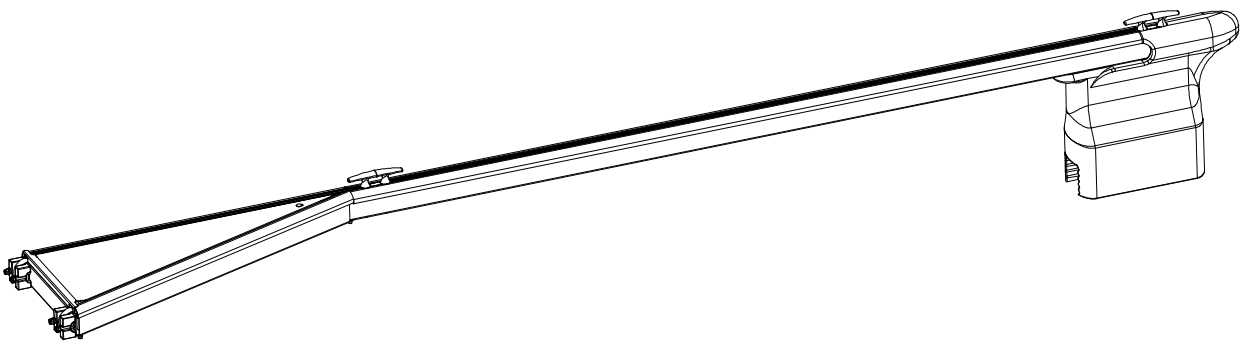
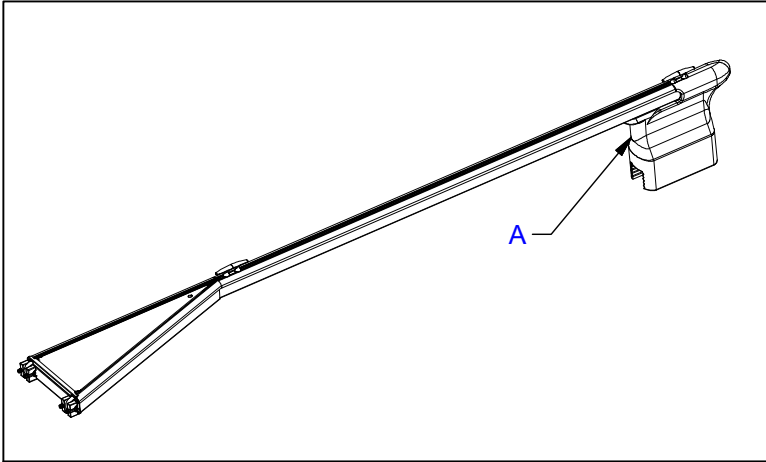


Finger

Assembly of floats at mooring boom.





Necessary equipment:

Prestressing factor:
M12 =

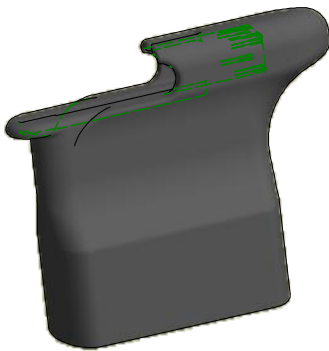


Spanner for: M12 (19mm)

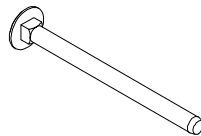
NB!

- Do not tighten until deformation of any steel or plastic parts.
- Do not put the steel construction directly at the ground to prevent damage at the surface.

PARTS



Item 1
Float
Art. 5001125
Art. 5001124



Item 2
Locking bolt M12x160 - DIN603 VZ
Art. 4212160

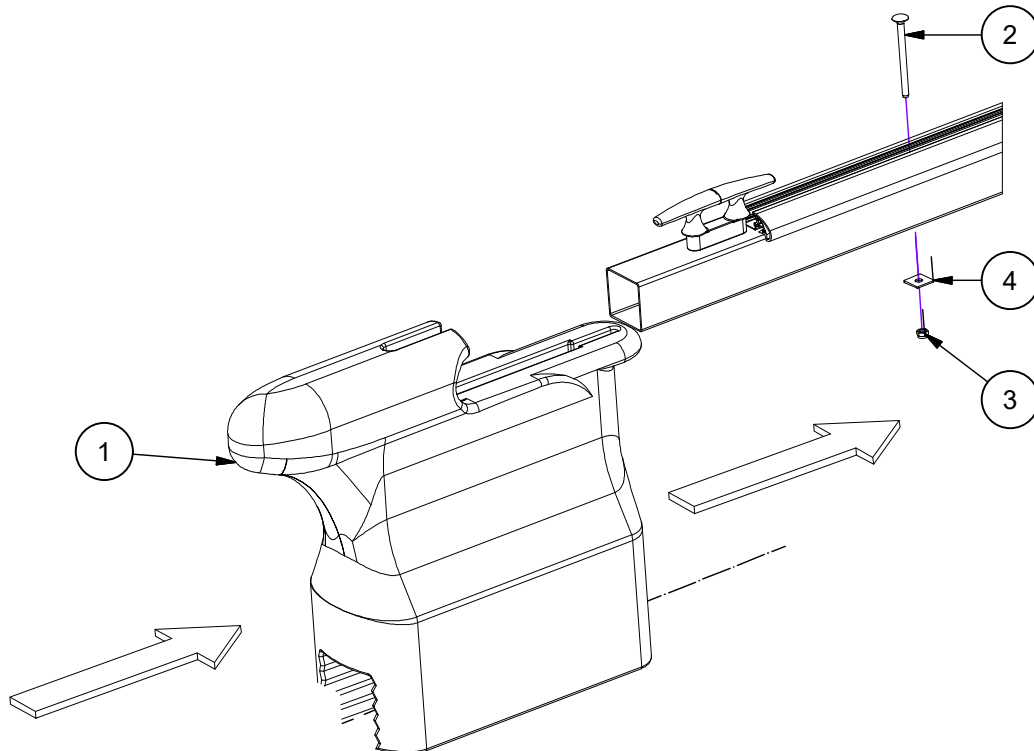


Item 3
Nut M12 - DIN985
Art. 4912012



Item 4
Square Washer M12 - DIN436 VZ
Art. 4812004

A End float



(Item 5, extra Polystyrene float, only 6- and 8m mooring boom)