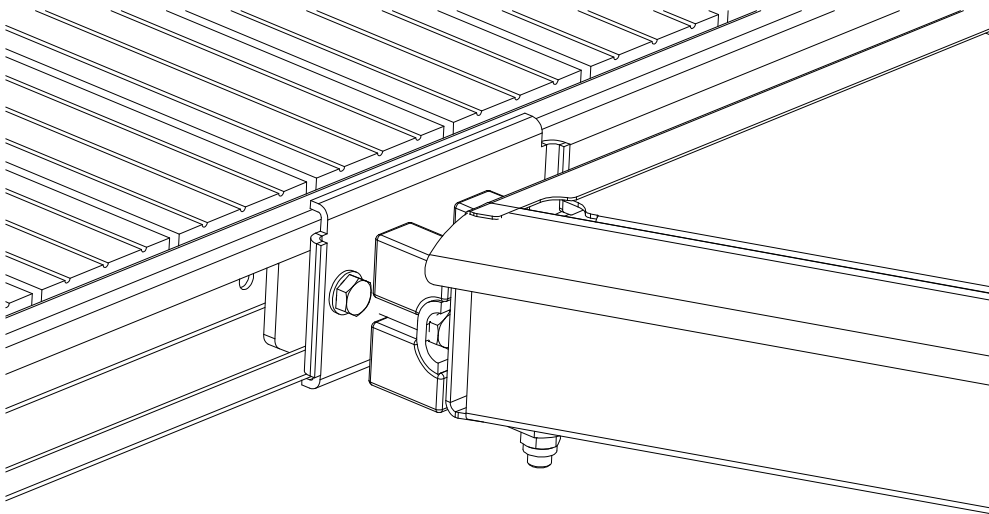
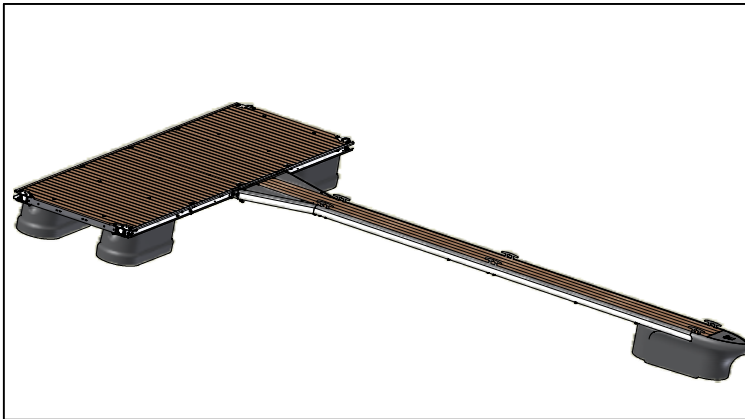


Finger

Assembly of coupling against pontoon



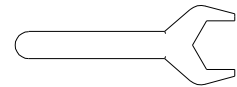


Necessary equipment:

Prestressing factor:

M16 = 180 Nm

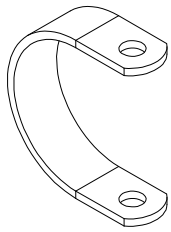
Spanner for M16 (24mm)



NB!

- Do not tighten until deformation of any steel or plastic parts.

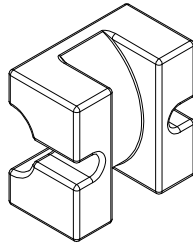
- Do not put the steel construction directly at the ground to prevent damage at the surface.



Item 3 x 1
Nr.5001156CC
Bow



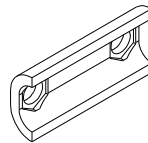
Item 6 x 3
Nr.4912016
M16 - DIN 985 A4



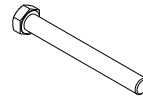
Item 4 x 1
Nr.5001157
Rubber hinge



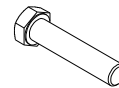
Item 7 x 6
Nr.4816001
M16 - DIN 125 VZ



Item 5 x 1
Nr.5001371CC
Bracket



Item 8 x 1
Nr.4016161
M16x160 - DIN 931 VZ

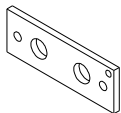


Item 9 x 2
Nr.4016071
M16x70 - DIN 933 VZ

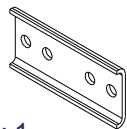


Item 10 x 2
Nr.4016036
M16x35 - DIN 933 VZ

For C-Profil pontoons:

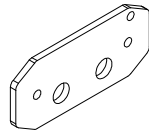


Item 1 x 1
Nr.5001274CC
Bracket

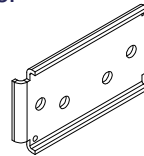


Item 2 x 1
Nr.5001275CC
Bracket

For standar steel pontoons:

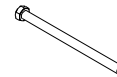


Item 1 x 1
Nr.5001372CC
Bracket

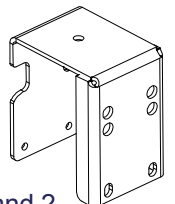


Item 2 x 1
Nr.5001373CC
Bracket

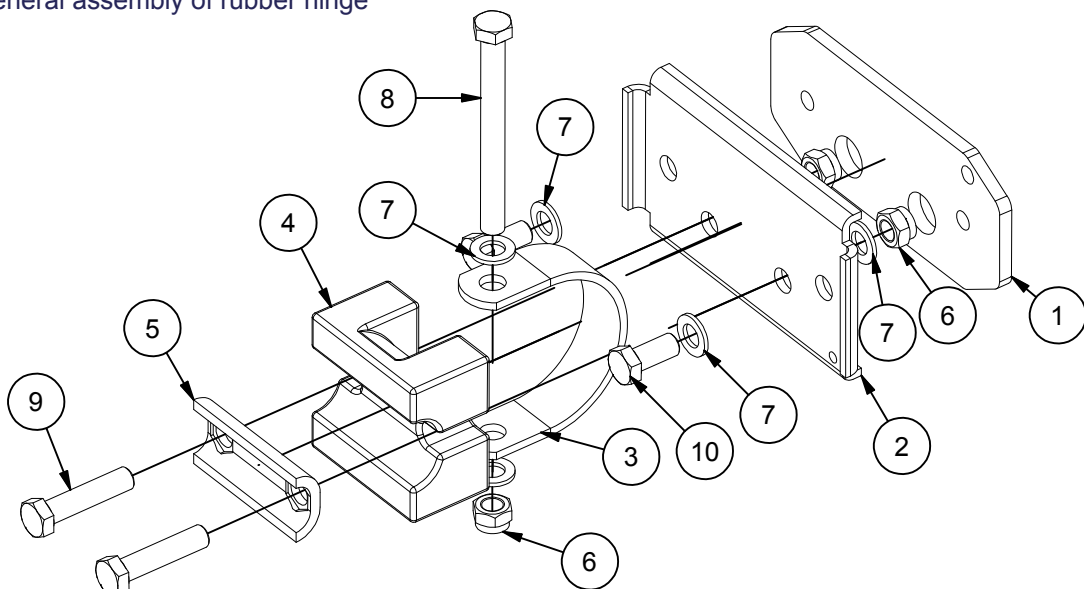
For pontoons with
Nr.5001379CC
128x148 wood fender:



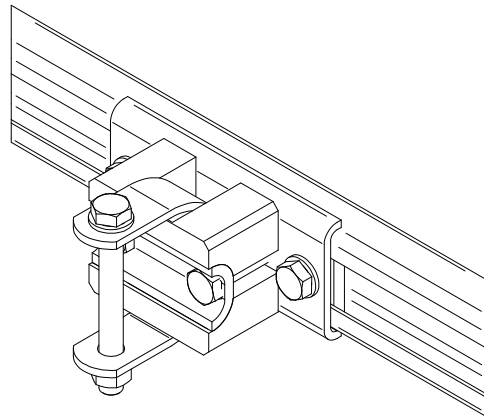
Replace both item 1 and 2.
Nr.401281
Item 1 x 1 Bracket
and Item 2 x 2 M12x180 DIN 931 VZ



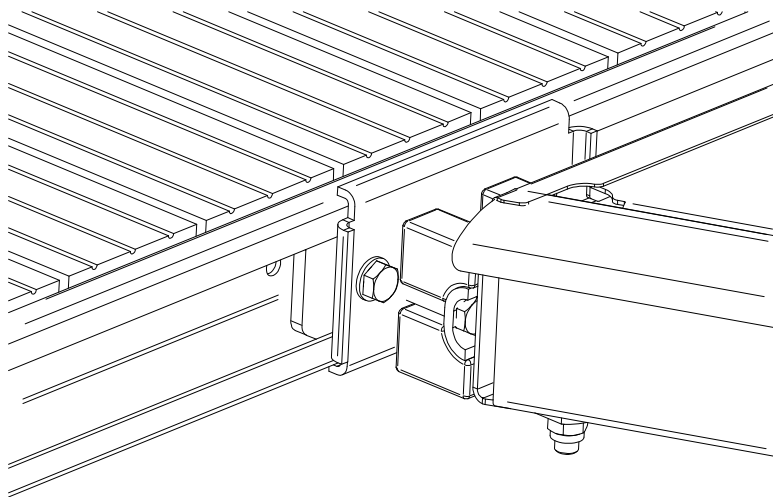
1 Exploded general assembly of rubber hinge



2 Installed at C-Profile



3 Installed at standard steel pontoon.



4 Installed at pontoon with wood fender.

